

ArcGIS for AutoCAD: An Introduction



2018 ILGISA Annual Conference

Presented by:

Erin Strickler, PE



GIS

OR

CAD

Low on Accuracy

WRONG

Low on Data

WRONG

“All models are **WRONG**;
some are useful.” George Box

GIS

AND

CAD

Large Amount
of Data

Higher Accuracy

= MORE USEFUL MODELS

Ways to integrate CAD and GIS

CAD to GIS

- Open directly in GIS
- Export to shapefile

GIS to CAD

- Export to shapefile
- Export to CAD

What about the data???

ArcGIS for AutoCAD

- What it is
- What it can do
- What it can't do
- How to use it

What it is

- Free plug-in for AutoCAD from ESRI
- arcgisforautocad.dll
- Load manually with NETLOAD in DWG file or
- Load with ArcGISForAutoCAD.exe



ArcGIS for AutoCAD 370

- Uses Mapping Specification for CAD (MSC)

What it can do

Brings GIS functionality to AutoCAD

- AutoCAD, AutoCAD Map 3D, AutoCAD Civil 3D
- Access maps and imagery
- Navigate Drawings using location

What it can do

Brings the Data to AutoCAD

- Create and Edit Feature Classes
- Turn CAD linework into GIS data
- View and Edit Feature Services

What it can't do (yet)

- Access enterprise servers federated with portal (late 2018)
- Access AGOL hosted services (2019)
- Read shapefiles

What it can't do

- Understand Civil3D objects
- Work with AutoCAD LT
- Create domains/subtypes

Download:

<https://www.esri.com/en-us/arcgis/products/arcgis-for-autocad>

ArcGIS Resources:

<https://resources.arcgis.com/en/help/arcgis-for-autocad>

YouTube GISCADChannel:

<https://www.youtube.com/channel/UCI0q3SW-F4ZZQmo9rYABgKw>

GIS CAD Interoperability Blog

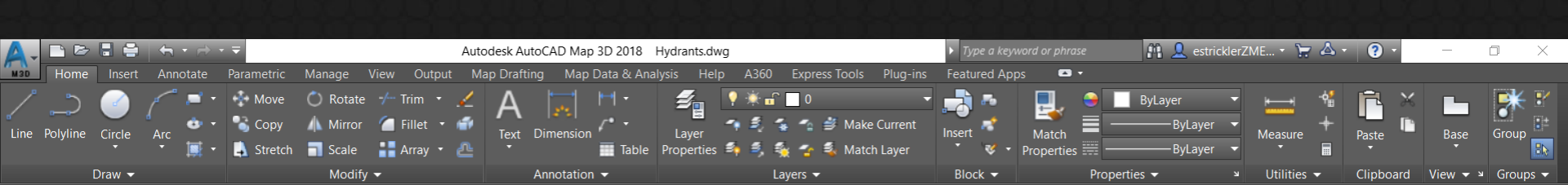
<http://giscadblog.blogspot.com>



Useful Links

How to use it

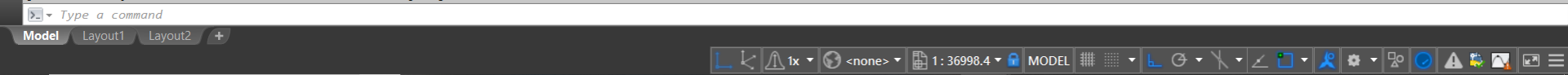
- Create GIS data in CAD
- Edit GIS Data from Service
- Questions?

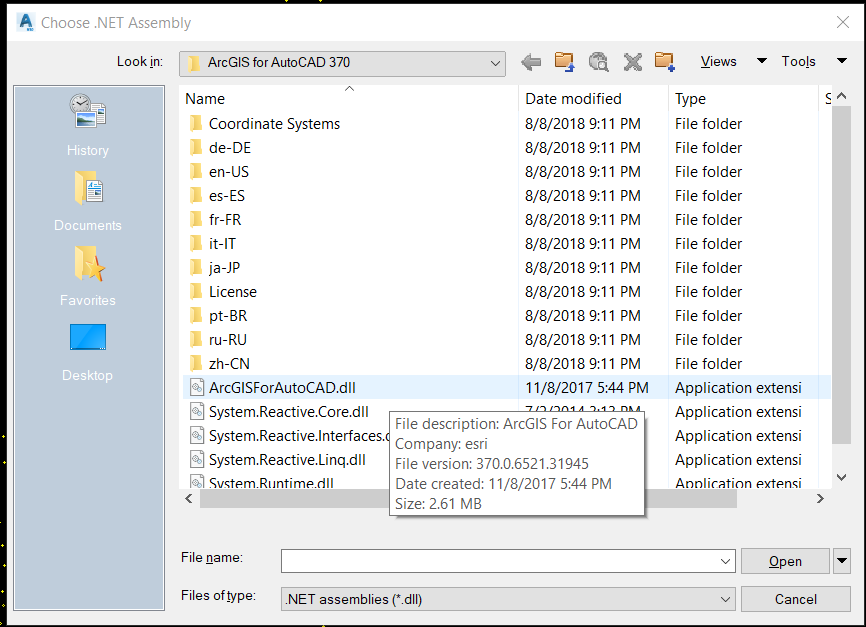
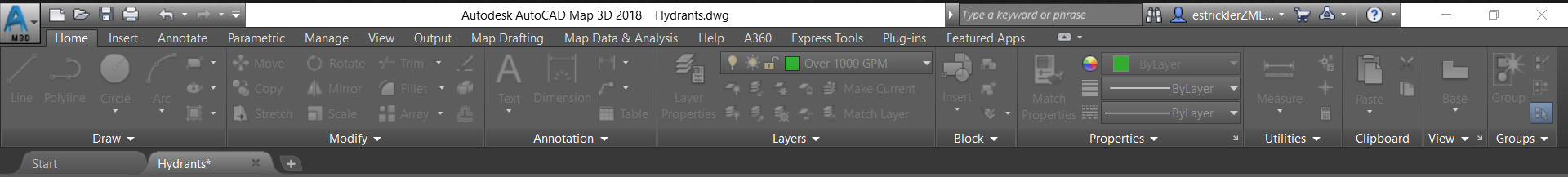


Start Working_Sewer Hydrants*

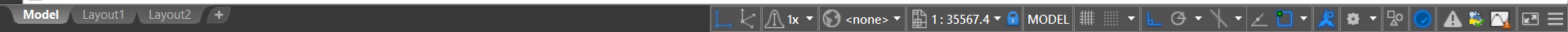
Create GIS data in CAD

Command: RE REGEN Regenerating model.
Command: Z ZOOM
Specify corner of window, enter a scale factor (nX or nXP), or
[All/Center/Dynamic/Extents/Previous/Scale/Window/Object] <real time>: e





Command: z ZOOM
Specify corner of window, enter a scale factor (nX or nXP), or
[All/Center/Dynamic/Extents/Previous/Scale/Window/Object] <real time>: e
Command: NETLOAD
Type a command



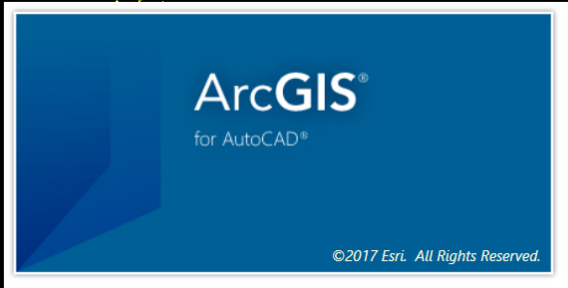
Autodesk AutoCAD Map 3D 2018 Hydrants.dwg

Home Insert Annotate Parametric Manage View Output Map Drafting Map Data & Analysis Help A360 Express Tools Plug-ins Featured Apps

Line Polyline Circle Arc Move Rotate Trim Copy Mirror Fillet Stretch Scale Array Text Dimension Table Layer Properties Layer Properties Layer Properties Match Layer Match Layer Match Layer Measure Paste Base Group

Draw Modify Annotation Layers Block Properties Utilities Clipboard View Groups

Start Hydrants*

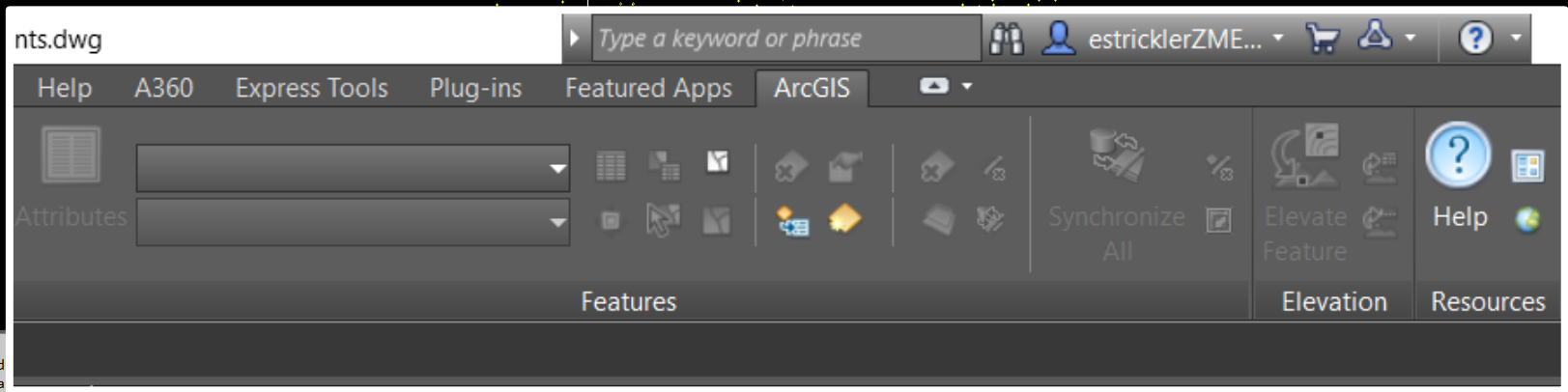
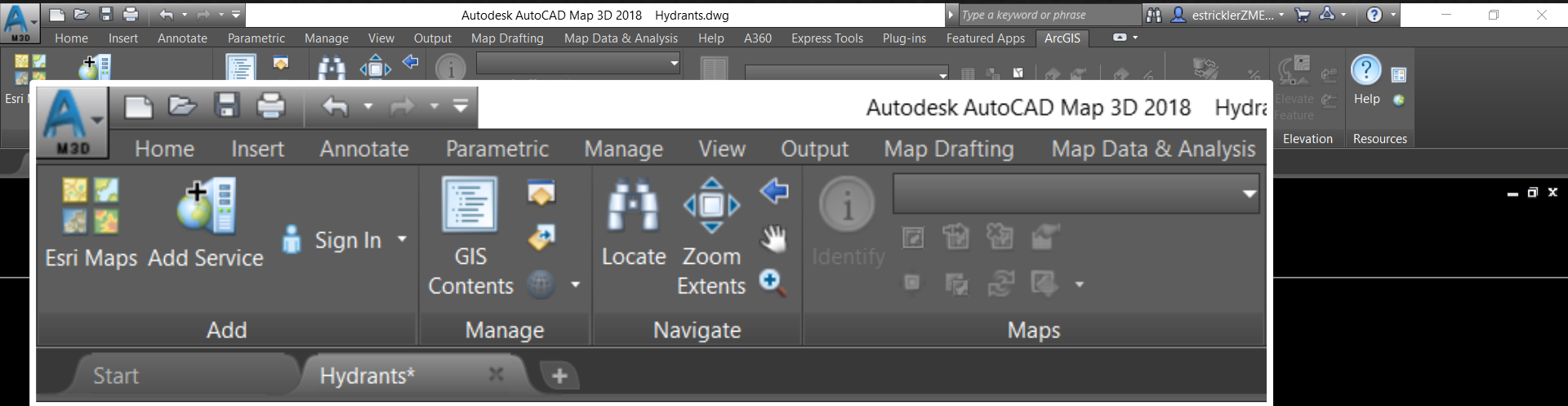


Command: z ZOOM
Specify corner of window, enter a scale factor (nX or nXP), or
[All/Center/Dynamic/Extents/Previous/Scale/Window/Object] <real time>: e
Command: NETLOAD

Type a command

Model Layout1 Layout2

1x <none> 1:35567.4 MODEL



Command:
**** System Variable Changed
1 of the monitored system va
Command:
Type a command

Autodesk AutoCAD Map 3D 2018 Hydrants.dwg

Home Insert Annotate Parametric Manage View Output Map Drafting Map Data & Analysis Help A360 Express Tools Plug-ins Featured Apps ArcGIS

Esri Maps Add Service Sign In GIS Contents Locate Zoom Extents Identify Attributes Over_1000_GPM

Assign Coordinate System List Coordinate System Remove Coordinate System Assign Vertical Units Remove Vertical Units

Features Synchronize All Elevate Feature Help Resources



Assign coordinate system

Command: Command: Command: Command: Specify opposite corner or [Fence/WPolygon/CPolygon]: *Cancel*

Type a command

Model Layout1 Layout2

1x <none> 1: 3617.02 MODEL







Autodesk AutoCAD Map 3D 2018 Hydrants.dwg

Home Insert Annotate Parametric Manage View Output Map Drafting Map Data & Analysis Help A360 Express Tools Plug-ins Featured Apps ArcGIS

Over_1000_GPM

Esri Maps Add Service Sign In GIS Contents Locate Zoom Extents Identify Attributes Synchronize All Elevate Feature Help Resources

Add Esri Map

 World Imagery	 World Topographic Map	 World Street Map
 World Light Gray Base	 World Ocean Base	 World Dark Gray Base

Close

Add Esri Map

Command:
Command:
Command:
Command: Specify opposite corner or [Fence/WPolygon/CPolygon]: *Cancel*

Model Layout1 Layout2

1x <none> 1:3617.02 MODEL

Autodesk AutoCAD Map 3D 2018 Hydrants.dwg

Home Insert Annotate Parametric Manage View Output Map Drafting Map Data & Analysis Help A360 Express Tools Plug-ins Featured Apps ArcGIS

World Imagery Over_1000_GPM

Attributes

Esri Maps Add Service Sign In GIS Contents Manage Locate Zoom Extends Navigate Identify Maps

Create Feature Classes from Layers
Create local feature classes from populated AutoCAD layers.
Press F1 for more help



Command: Autodesk DWG. This file is a TrustedDWG last saved by an Autodesk application or Autodesk licensed application.
Command:
Command:
Type a command

Model Layout1 Layout2

1x <none> 1:3617.02 MODEL

Start

- Feature Classes (Local)
 - Over_1000_GPM
 - t500_or_Less_GPM
 - t501_1000_GPM
 - UNK
- Feature Classes (Feature Service)
- Map Services
 - World Imagery
- Image Services

GIS CONTENTS

Comma
Comma
Comma
Comma

Current layer: 0

Filters

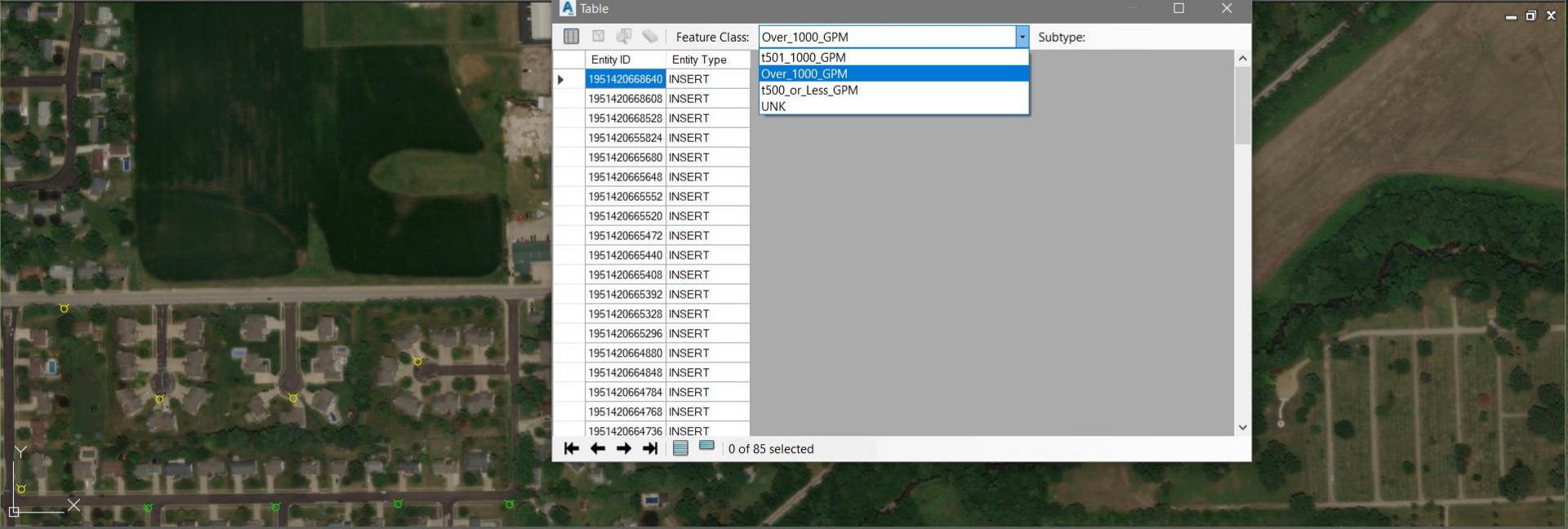
S...	Name	O	Free	Lo	Color	Linetype	Lineweight	Transp...	Plot St	P
✓	0				wh...	Continuous	— Defa...	0	Color_7	
	500 or Less GPM				red	Continuous	— Defa...	0	Color_1	
	501 - 1000 GPM				yel...	Continuous	— Defa...	0	Color_2	
	ESRI World Imagery				71	Continuous	— Defa...	0	Color_71	
	Over 1000 GPM				gre...	Continuous	— Defa...	0	Color_3	
	UNK				ma...	Continuous	— Defa...	0	Color_6	

Invert filter

All: 6 layers displayed of 6 total layers

Search for layer

LAYER PROPERTIES MANAGER



Table

Feature Class: Over_1000_GPM Subtype:

Entity ID	Entity Type
1951420668640	INSERT
1951420668608	INSERT
1951420668528	INSERT
1951420655824	INSERT
1951420665680	INSERT
1951420665648	INSERT
1951420665552	INSERT
1951420665520	INSERT
1951420665472	INSERT
1951420665440	INSERT
1951420665408	INSERT
1951420665392	INSERT
1951420665328	INSERT
1951420665296	INSERT
1951420664880	INSERT
1951420664848	INSERT
1951420664784	INSERT
1951420664768	INSERT
1951420664736	INSERT

0 of 85 selected

Command: 1 found
 Regenerating model.
 Command:
 Command:

Feature Class Properties

Name: Over1000_GPM

Type: Point

Query

Property:

Value: Layer
Color
Linetype
Lineweight

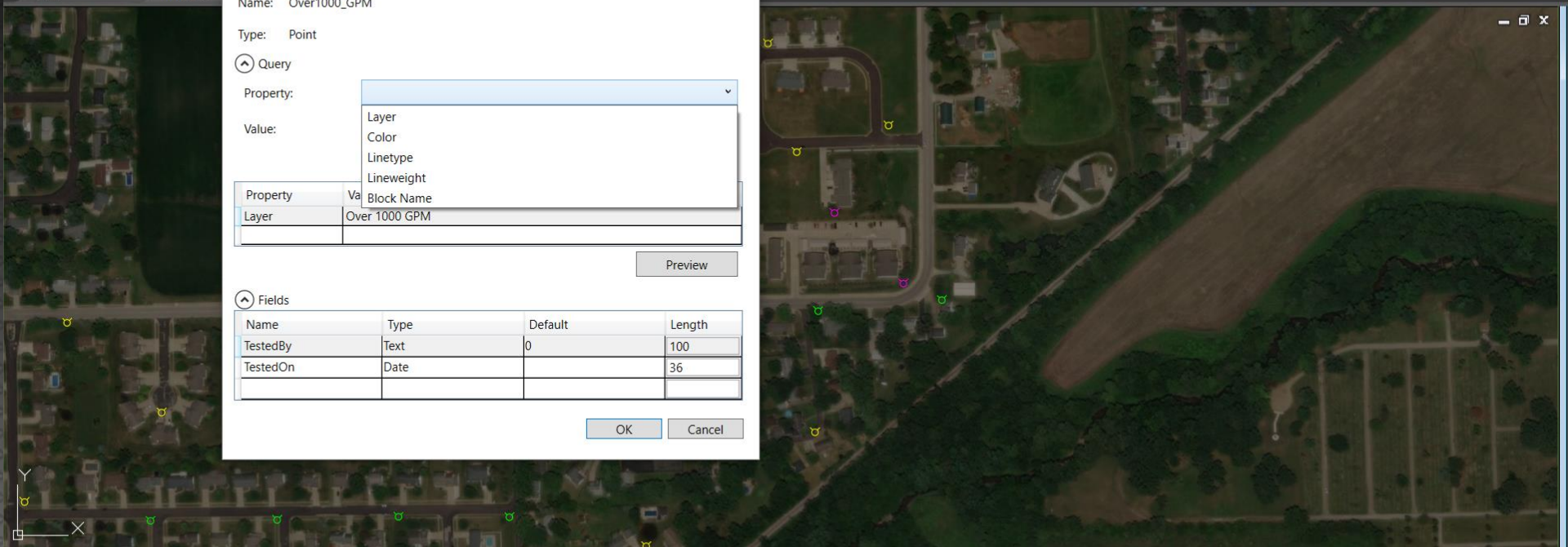
Property	Value
Layer	Over 1000 GPM

Preview

Fields

Name	Type	Default	Length
TestedBy	Text	0	100
TestedOn	Date		36

OK Cancel



Command: Autodesk DWG. This file is a TrustedDWG last saved by an Autodesk application or Autodesk licensed application.

Command:

Command:

Model Layout1 Layout2

New Feature Class

Open the Feature Class Properties window to define a new feature class.

Press F1 for more help

New Feature Class

Name:

Type:

- Point
- Point
- Polyline
- Polygon
- Annotation
- MultiPatch

Feature Class Properties

Name: Hydrants

Type: Point

Query

Property: Block Name

Value: fh_(Existing)

Append String Values

Property	Value
Layer	*
Block Name	fh_(Existing)

Preview

Fields

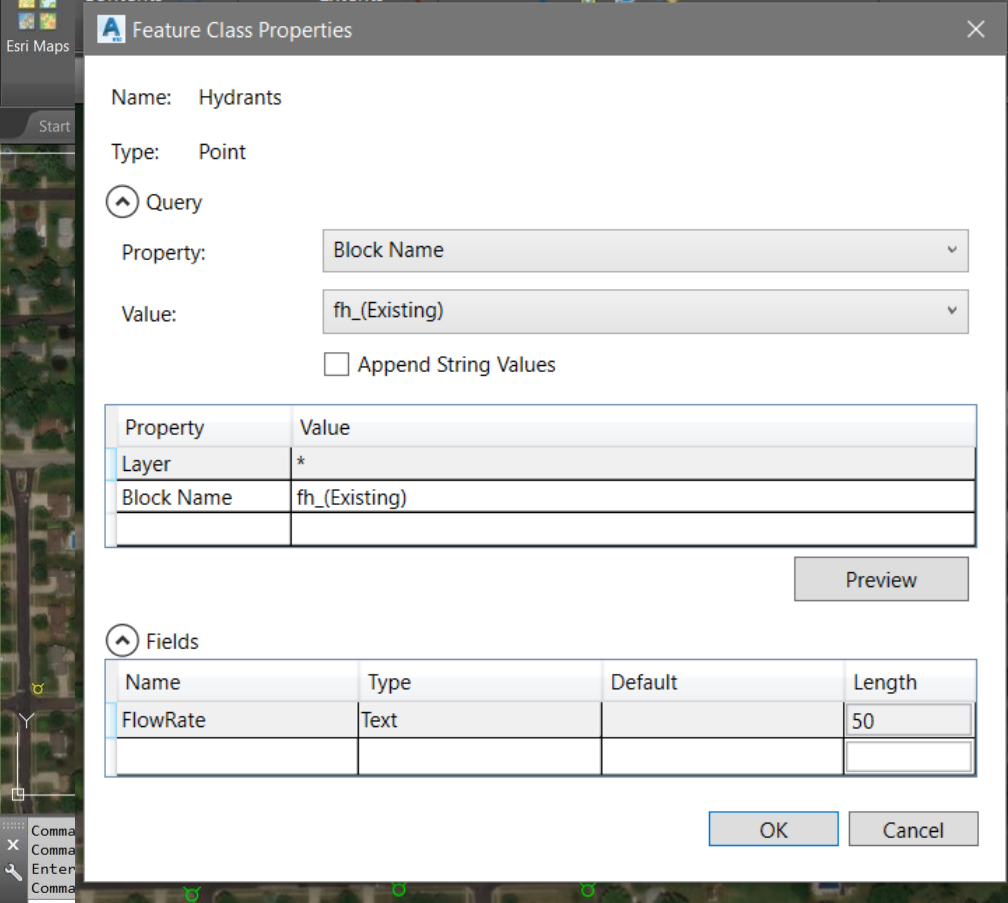
Name	Type	Default	Length
FlowRate	Text		50

OK Cancel

New Feature Class

Open the Feature Class Properties window to define a new feature class.

Press F1 for more help



Home Insert Annotate Parametric Manage View Output Map Drafting Map Data & Analysis Help A360 Express Tools Plug-ins Featured Apps ArcGIS

Esri Maps Add Service Sign In

Add

Start Hydrants*

Table

Feature Class: Hydrants

Entity ID	Entity Type	FlowRate
1936774995168	INSERT	
1936774995152	INSERT	
1936774995136	INSERT	
1936774995120	INSERT	
1936774995104	INSERT	
1936774995088	INSERT	
1936774995072	INSERT	
1936774995056	INSERT	
1936774995040	INSERT	
1936774995024	INSERT	
1936774995008	INSERT	
1936774994992	INSERT	
1936774994976	INSERT	
1936774994960	INSERT	
1936774994944	INSERT	
1936774994928	INSERT	
1936774994912	INSERT	
1936774994896	INSERT	
1936774994880	INSERT	

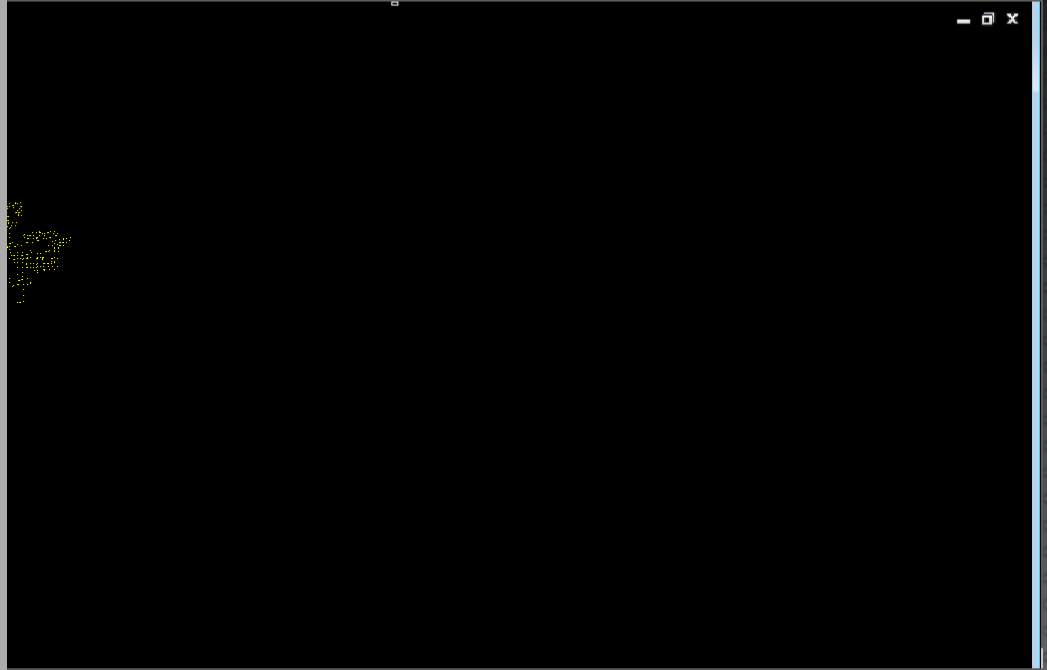
Hydrants

Open Attribute Table

Open the attribute table for the current feature class.

Press F1 for more help

Elevate Feature Elevation Help Resources



Enter the number of operations

Command:

Command:

Command:

ESRI_ATTRIBUTES ESRI_ATTRIBUTES ESRI_ATTRIBUTES ESRI_SELECTFEATUREOBJECTS

Feature Attributes

Hydrants

Entity ID	*-Varies-* - (560 features selected)
Type	INSERT
FlowRate	501 - 1000 GPM

Close



Command:
Command:
Command:
Select features: Specify opposite corner: 560 found

Home Insert Annotate Parametric Manage View Output Map Drafting Map Data & Analysis Help A360 Express Tools Plug-ins Featured Apps ArcGIS

Esri Maps Add S... Start

gery Hydrants

Attrib

Edit Feature Attributes
Edit attributes attached to a selected feature.
Press F1 for more help

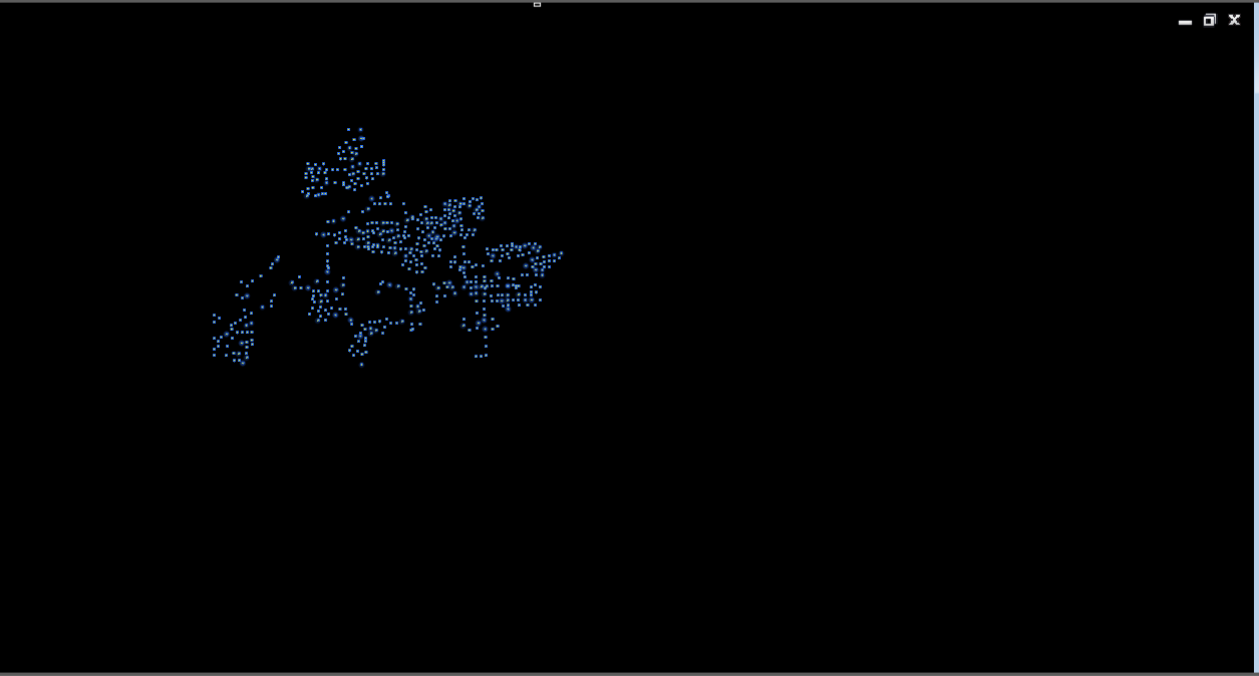
Synchronize All Elevate Feature Help Resources

Table

Feature Class: Hydrants

Entity ID	Entity Type	FlowRate
1936774995168	INSERT	
1936774995152	INSERT	
1936774995136	INSERT	
1936774995120	INSERT	
1936774995104	INSERT	
1936774995088	INSERT	
1936774995072	INSERT	501 - 1000 GPM
1936774995056	INSERT	501 - 1000 GPM
1936774995040	INSERT	501 - 1000 GPM
1936774995024	INSERT	501 - 1000 GPM
1936774995008	INSERT	501 - 1000 GPM
1936774994992	INSERT	501 - 1000 GPM
1936774994976	INSERT	501 - 1000 GPM
1936774994960	INSERT	501 - 1000 GPM
1936774994944	INSERT	501 - 1000 GPM
1936774994928	INSERT	501 - 1000 GPM
1936774994912	INSERT	501 - 1000 GPM
1936774994896	INSERT	501 - 1000 GPM
1936774994880	INSERT	501 - 1000 GPM

0 of 666 selected



ArcGIS Pro - ArcGIS for AutoCAD - Hydrants

Erin (Cloudpoint Geographics Portal)

Project | Map | Insert | Analysis | View | Edit | Imagery | Share | View

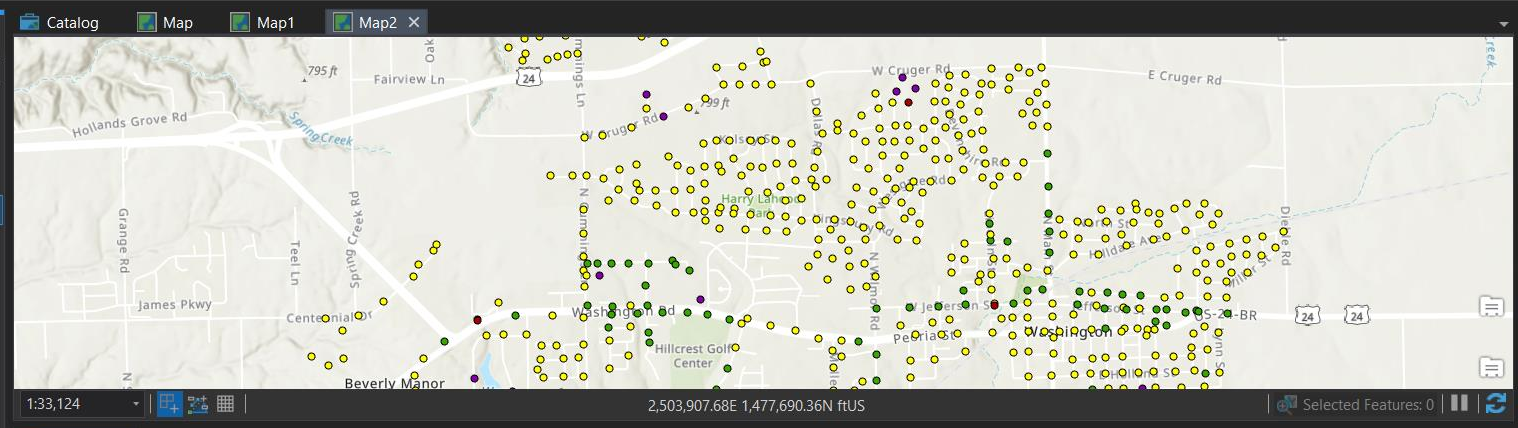
Clipboard | Navigate | Layer | Selection | Inquiry | Labeling | Offline

Contents

Search

Drawing Order

- Map2
 - Hydrants
 - FlowRate
 - 501 - 1000 GPM
 - Less than 500 GPM
 - More than 1001
 - Unknown
 - <all other values>
 - World Topographic Map
 - World Hillshade



Hydrants

Field: Add Delete Calculate Selection: Zoom To Switch Clear Delete Copy

	Handle	Layer	LyrColor	LyrLnType	LyrLineWt	Color	Linetype	Elevation	LineWt	RefName	Angle	FlowRate
	BD	501 - 1000 GPM	2	Continuous	-3	2	Continuous	0	25	fh_Existing	0	501 - 1000 GPM
	BE	501 - 1000 GPM	2	Continuous	-3	2	Continuous	0	25	fh_Existing	0	501 - 1000 GPM
	BF	501 - 1000 GPM	2	Continuous	-3	2	Continuous	0	25	fh_Existing	0	501 - 1000 GPM
	C0	Over 1000 GPM	3	Continuous	-3	3	Continuous	0	25	fh_Existing	0	More than 1001
	C1	Over 1000 GPM	3	Continuous	-3	3	Continuous	0	25	fh_Existing	0	More than 1001
	C2	Over 1000 GPM	3	Continuous	-3	3	Continuous	0	25	fh_Existing	0	More than 1001
	C3	501 - 1000 GPM	2	Continuous	-3	2	Continuous	0	25	fh_Existing	0	501 - 1000 GPM
	C4	501 - 1000 GPM	2	Continuous	-3	2	Continuous	0	25	fh_Existing	0	501 - 1000 GPM
	C5	500 or Less GPM	1	Continuous	-3	1	Continuous	0	25	fh_Existing	0	Less than 500 GPM
	C6	Over 1000 GPM	3	Continuous	-3	3	Continuous	0	25	fh_Existing	0	More than 1001

Autodesk AutoCAD Map 3D 2018 Drawing1.dwg

Home Insert Annotate Parametric Manage View Output Map Drafting Map Data & Analysis Help A360 Express Tools Plug-ins Featured Apps ArcGIS

Esri Maps Add Service Sign In GIS Contents Manage Locate Zoom Extents Navigate Identify Attributes Maps Features Synchronize All Elevate Feature Elevation Help Resources

Start Drawing1

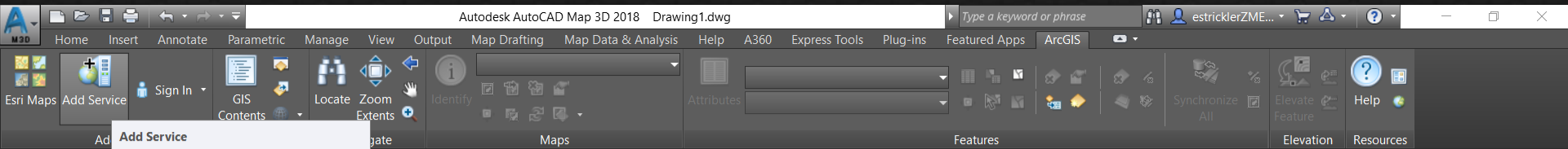
Edit GIS Data from Service

Command: Command: Command: _RIBBON Command: _netload Assembly file name: "C:/Program Files/ArcGIS for AutoCAD 370/arcgisforautocad.dll"

Type a command

Model Layout1 Layout2

1x <none> 1: 0.935341 MODEL



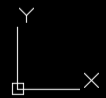
Add Service
Add an ArcGIS service to the current drawing.
Press F1 for more help

Warning: No Coordinate System Defined

This drawing does not have a coordinate system defined.

Click Assign to assign a coordinate system or click Ignore to bypass this step.

Assign Ignore





Command:
Command: _RIBBON
Command: _netload Assembly file name: "C:/Program Files/ArcGIS for AutoCAD 370/arcgisforautocad.dll"
Command:
Type a command



Add GIS Service

Select a GIS Server

 **services.arcgisonline.com/ArcGIS/services/**
https://services.arcgisonline.com/arcgis/services

 **New Server Connection**
Provide connection information for a server not listed

Next Cancel

Add GIS Service

Specify Server Connection Information

Server Name

Server URL

Example: http://myServer/ArcGIS/Services

Account (Optional)

User Name

Password

Next Cancel

Command: _RIBBON
Command: _netload Assembly file name: "C:/Program Files/ArcGIS for AutoCAD 370/arcgisforautocad.dll"
Command:
Command:

Add GIS Service

Select a GIS Service

- Storm_Sewer_Pipe
 - Cemeteries
 - DroneFlights
 - Hosted
 - System
 - Utilities
 - YourCity
 - YourCity_SewerNetwork
 - YourCity_SewerNetwork
 - YourCity_StormNetwork**
 - YourCity_StormNetwork
 - YourCity_WaterDistribution
 - YourCity_WaterDistribution

Export Properties

Set bounding box from: Service Extent

Bounding box:

	X	Y
Min	-9915153.12790376	5146281.81702954
Max	-9911156.17673131	5151190.8176246

Add features for: Editing

Service Information

URL: https://webmap.cloudpointgeo.com/cdptgis/rest/services/YourCity/YourCity_StormNetwork/FeatureServer

Type: Feature Server

Server Version: 10.6

Service URL: https://webmap.cloudpointgeo.com/cdptgis/rest/services/YourCity/YourCity_StormNetwork/FeatureServer

Service Description: A series of layers that represent the stormwater network for a Utility. These layers have been optimized for display as a hosted tiled and feature service and for display on the web and mobile devices.

Capabilities: Query,Create,Update,Delete,Uploads,Editing

Units: esriMeters

Supported Query Formats: JSON, AMF

Allow Geometry Updates: True

Supports True Curve: True

Allows True Curve Updates: False

True Curve Clients Only: True

Supports Apply Edits with Global Ids: False

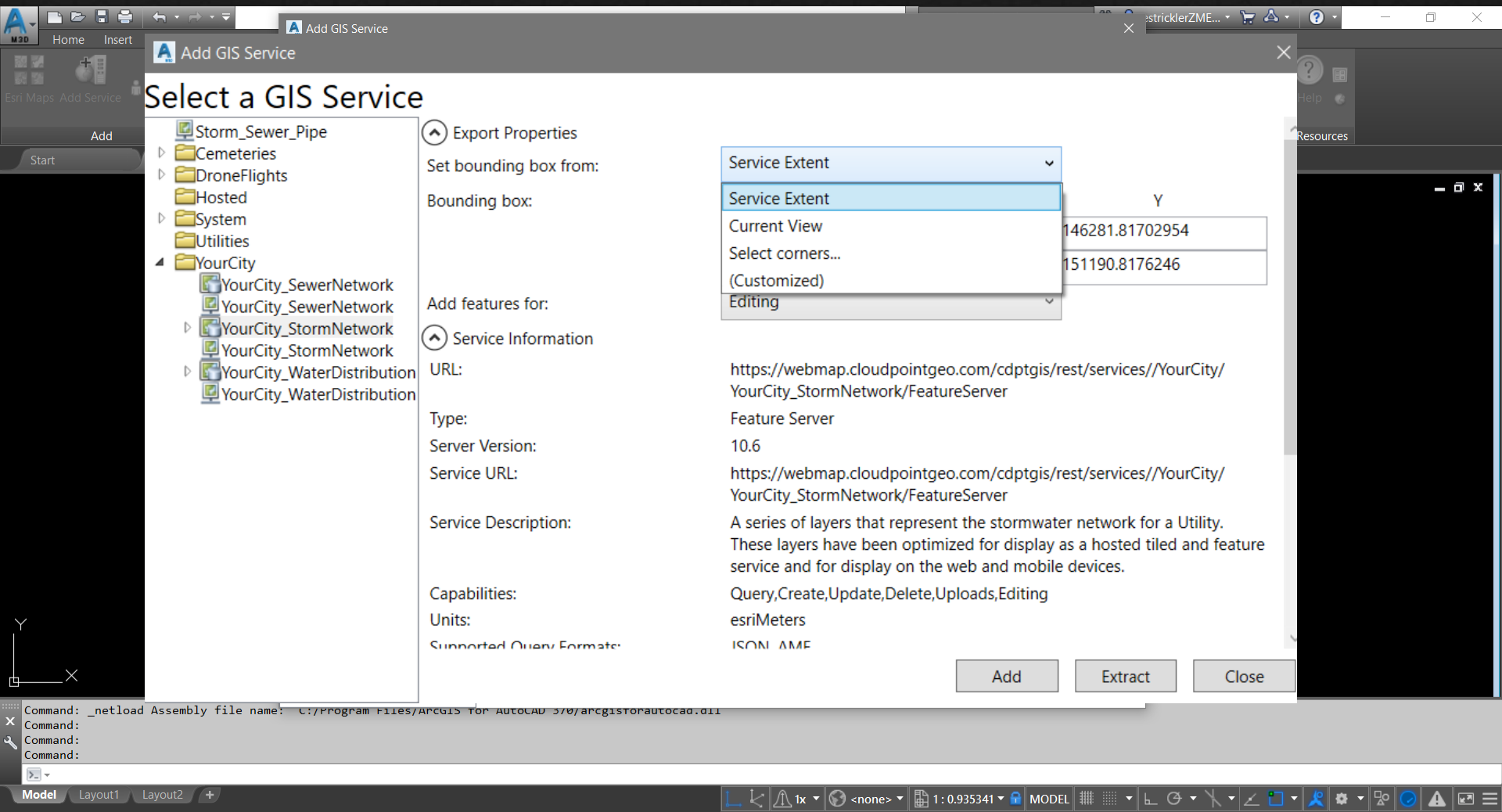
Extent:

	X	Y
Min	-9915153.1279037576	5146281.8170295386
Max	-9911156.1767313052	5151190.8176245969

WKID: 102100

Add Extract Close

Command: _netload Assembly file name: C:/Program Files/ArcGIS Top AutoCAD 370/arcgistorautocad.dll
 Command:
 Command:
 Command:



Add GIS Service

Select a GIS Service

- Storm_Sewer_Pipe
- ▶ Cemeteries
- ▶ DroneFlights
- ▶ Hosted
- ▶ System
- ▶ Utilities
- ▶ YourCity
 - YourCity_SewerNetwork
 - YourCity_SewerNetwork
 - ▶ YourCity_StormNetwork
 - YourCity_StormNetwork
 - ▶ YourCity_WaterDistribution
 - YourCity_WaterDistribution

Export Properties

Set bounding box from:

Bounding box:

Service Extent

Service Extent

Current View

Select corners...

(Customized)

Editing

Y
146281.81702954
151190.8176246

Add features for:

Service Information

URL: https://webmap.cloudpointgeo.com/cdptgis/rest/services//YourCity/YourCity_StormNetwork/FeatureServer

Type: Feature Server

Server Version: 10.6

Service URL: https://webmap.cloudpointgeo.com/cdptgis/rest/services//YourCity/YourCity_StormNetwork/FeatureServer

Service Description: A series of layers that represent the stormwater network for a Utility. These layers have been optimized for display as a hosted tiled and feature service and for display on the web and mobile devices.

Capabilities: Query,Create,Update,Delete,Uploads,Editing

Units: esriMeters

Supported Query Formats: ICON AMF

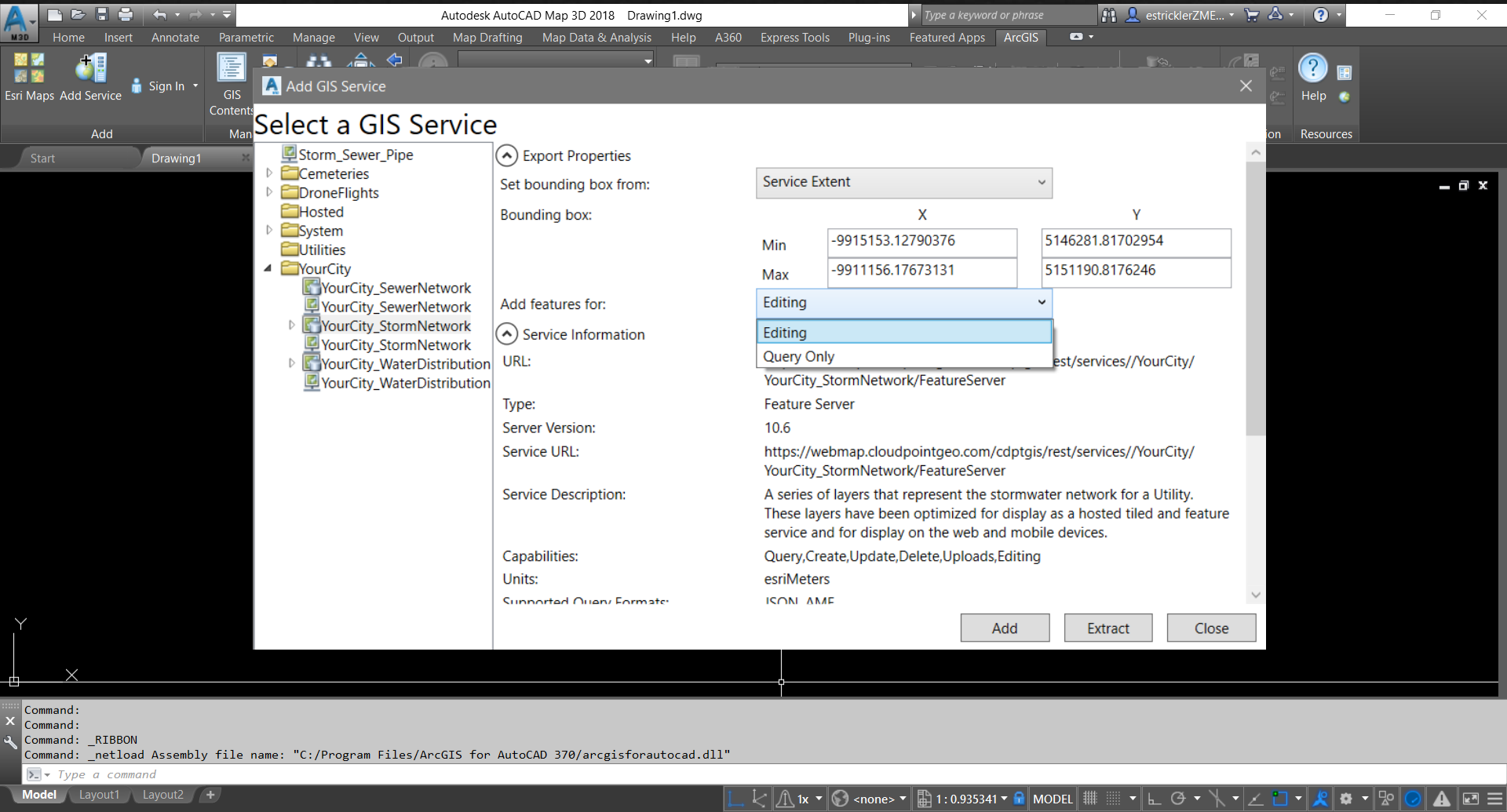
Add Extract Close

Command: _netload Assembly file name: C:/Program Files/ARCGIS for AutoCAD 3.0/arcgisstorautocad.dll

Command:

Command:

Command:



Select a GIS Service

- Storm_Sewer_Pipe
- ▶ Cemeteries
- ▶ DroneFlights
- ▶ Hosted
- ▶ System
- ▶ Utilities
- ▶ YourCity
 - YourCity_SewerNetwork
 - YourCity_SewerNetwork
 - ▶ YourCity_StormNetwork
 - YourCity_StormNetwork
 - ▶ YourCity_WaterDistribution
 - YourCity_WaterDistribution

Export Properties

Set bounding box from:

Service Extent

Bounding box:

	X	Y
Min	-9915153.12790376	5146281.81702954
Max	-9911156.17673131	5151190.8176246

Add features for:

- Editing
- Editing
- Query Only

Service Information

URL:

https://webmap.cloudpointgeo.com/cdptgis/rest/services/YourCity/

Type:

YourCity_StormNetwork/FeatureServer

Server Version:

Feature Server

10.6

Service URL:

https://webmap.cloudpointgeo.com/cdptgis/rest/services/YourCity/YourCity_StormNetwork/FeatureServer

Service Description:

A series of layers that represent the stormwater network for a Utility. These layers have been optimized for display as a hosted tiled and feature service and for display on the web and mobile devices.

Capabilities:

Query,Create,Update,Delete,Uploads,Editing

Units:

esriMeters

Supported Query Formats:

JSON, AMF

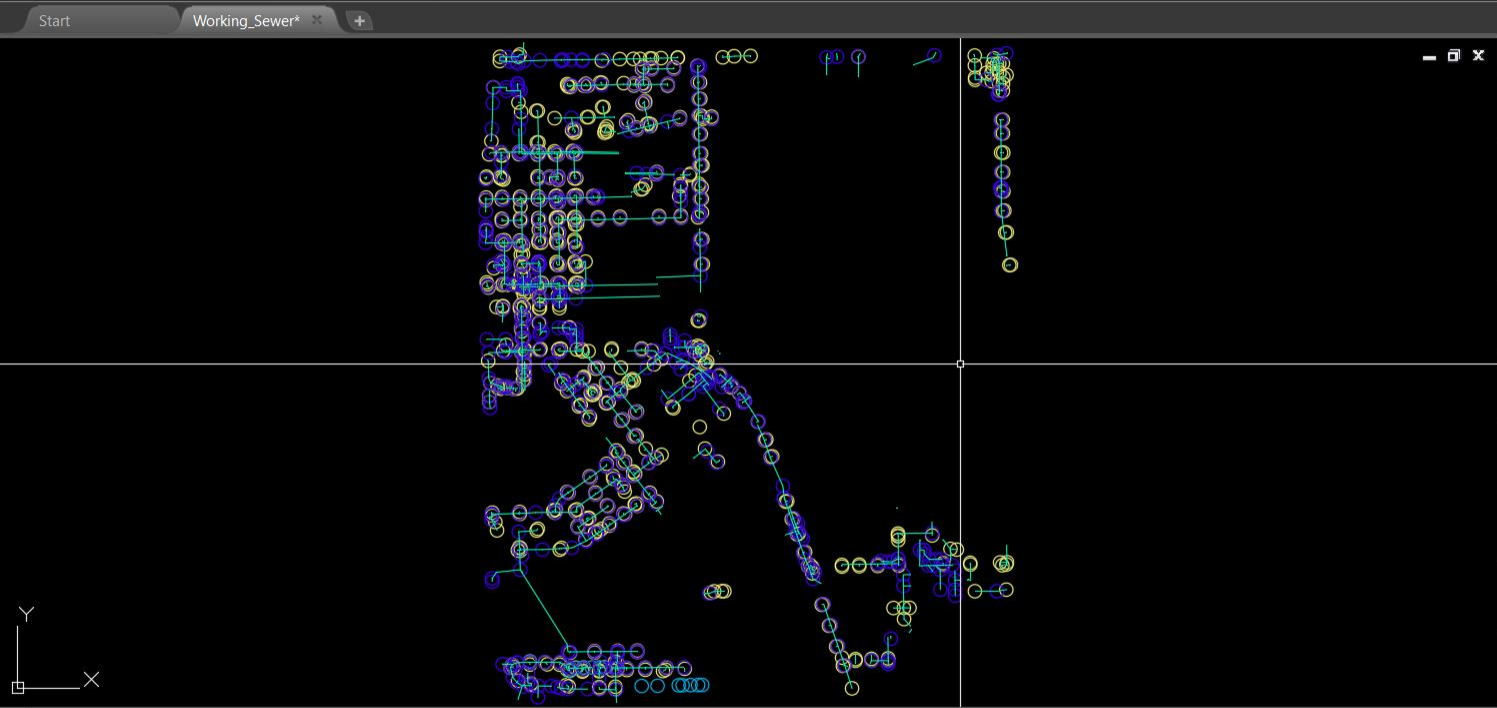
Add Extract Close

Command:
 Command:
 Command: _RIBBON
 Command: _netload Assembly file name: "C:/Program Files/ArcGIS for AutoCAD 370/arcgisforautocad.dll"

Autodesk AutoCAD Map 3D 2018 Working_Sewer.dwg

Home Insert Annotate Parametric Manage View Output Map Drafting Map Data & Analysis Help A360 Express Tools Plug-ins Featured Apps ArcGIS

Line Polyline Circle Arc Move Rotate Trim Copy Mirror Fillet Stretch Scale Array Text Dimension Table Layer Properties Layers Insert Match Properties Block Properties Utilities Clipboard View Groups



TOOL PALETTES - ALL PALETTES

- Clean_Outs_YourCity_StormNetwork
- Discharge_Points_YourCity_StormNetwork
- Gravity_Mains_YourCity_StormNetwork
- Inlets_YourCity_StormNetwork
- Manholes_YourCity_StormNetwork

Command: Z ZOOM
Specify corner of window, enter a scale factor (nX or nXP), or [All/Center/Dynamic/Extents/Previous/Scale/Window/Object] <real time>: E Regenerating model.

Model Layout1 Layout2

1x <none> 1: 889.345 MODEL

Current layer: 0

Filters: All, All Used Layers

S...	Name	O	Free	Lo	Color	Linetype	Lineweight	Transp...	Plot St	P	N...	Description
✓	0	!	!	!	wh...	Continu...	— Defa...	0	Color_7			
	Defpoints	!	!	!	wh...	Continu...	— Defa...	0	Color_7			
	ESRI_Clean_Outs_YourCity_StormNetwork	!	!	!	140	Continu...	— Defa...	0	Color_...			
	ESRI_Discharge_Points_YourCity_StormNetwork	!	!	!	61	Continu...	— Defa...	0	Color_61			
	ESRI_Gravity_Mains_YourCity_StormNetwork	!	!	!	120	Continu...	— Defa...	0	Color_...			
	ESRI_Inlets_YourCity_StormNetwork	!	!	!	51	Continu...	— Defa...	0	Color_51			
	ESRI_Manholes_YourCity_StormNetwork	!	!	!	180	Continu...	— Defa...	0	Color_...			

Layer Properties Manager: All: 7 layers displayed of 7 total layers

Current point modes: PDMODE=33 PDSI...
 Specify a point:
 Command: U POINT GROUP
 Command:
 Type a command

Autodesk AutoCAD Map 3D 2018 Working_Sewer.dwg

Type a keyword or phrase

estricklerZME...

Home Insert Annotate Parametric Manage View Output Map Drafting Map Data & Analysis Help A360 Express Tools Plug-ins Featured Apps ArcGIS

World Imagery

Gravity_Mains_YourCity_StormN...

Attributes

Esri Maps Add Service Sign In

GIS Contents

Locate Zoom Extents

Identify

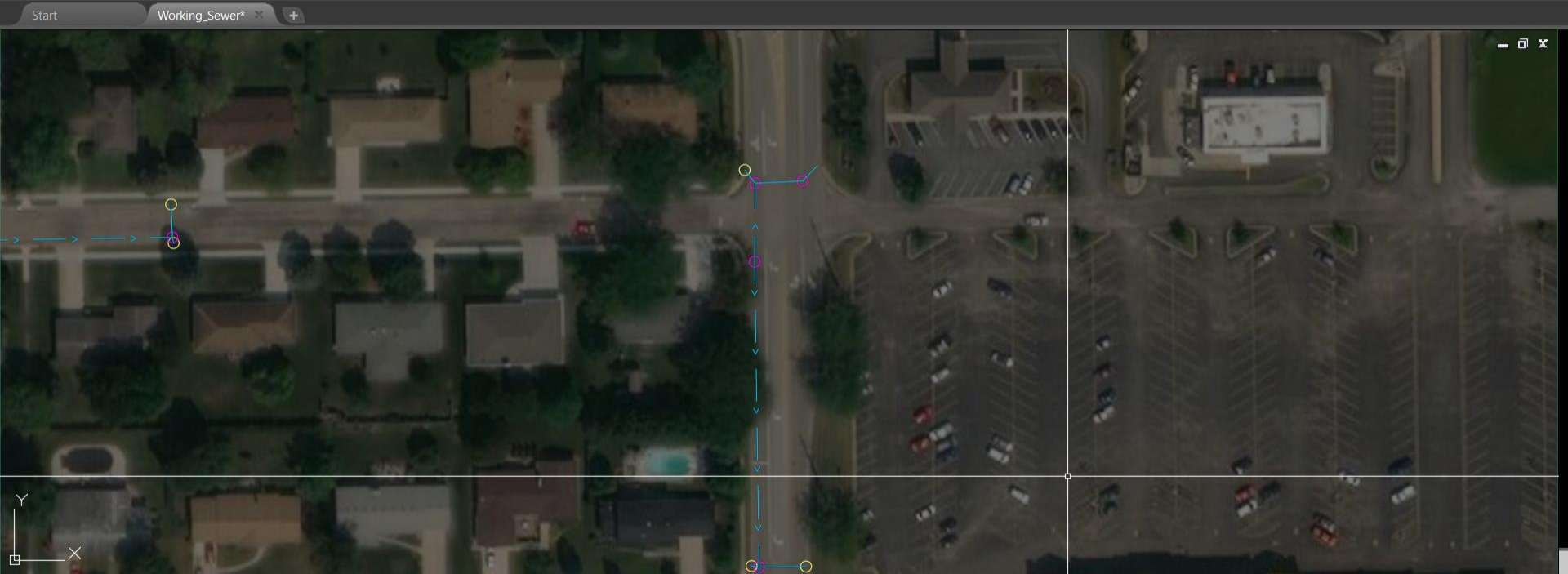
Features

Synchronize All

Elevate Feature

Help

Resources



Command:
Command:
Command: *Cancel1*
Command:
Type a command

Model Layout1 Layout2

1x

<none>

1:30.018

MODEL

Navigation and tool icons

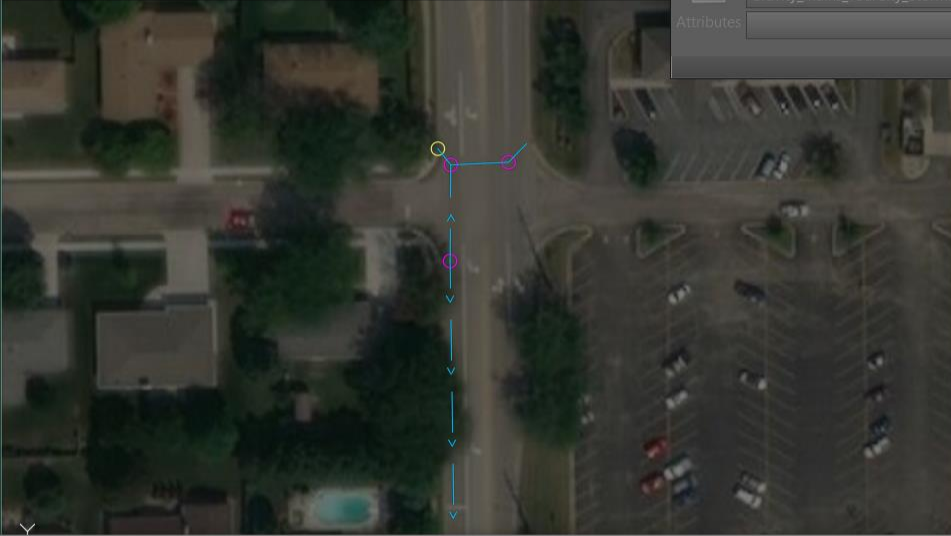
Working_Se... Type a keyword or phrase

Home Insert Annotate Parametric Manage View Output Map Drafting Map Data & Analysis

Esri Maps Add Service GIS Contents Locate Zoom Extents Identify World Imagery Features Elevation Resources

Add Manage Navigate Maps

Start Working_Sewer*



Table

Feature Class: Gravity_Mains_YourCity_StormNetwork Subtype:

Entity ID	Entity Type	Mod Status	activeflag	comments	diameter	downlev	enabled	facilityid	frommh
2231640558816	LINE		True		36"	0	True		
2231640558400	LWPOLYLINE		True		24"	0	True		
2231640557984	LINE		True		24"	0	True		

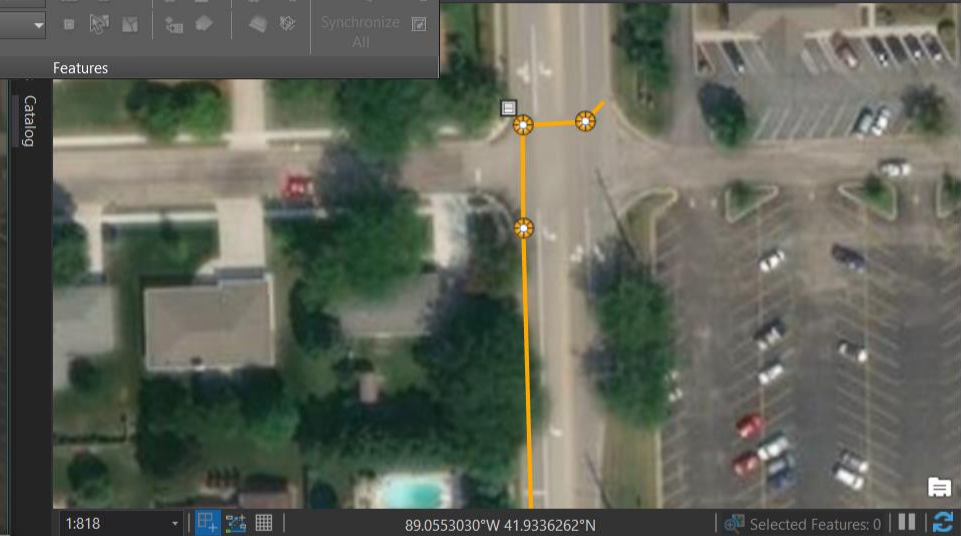
0 of 1259 selected

ArcGIS Pro - ArcGI... Ta... Feature Layer

Project Map Inse Ana View Edit Ima Sha View Appearance Labeling Data Erin (Cloudpoint Geographics Portal)

Clipboard Explore Bookmarks Go To XY Layer

Select Select By Attributes Select By Location Inquiry Labeling Offline



1:818 89.0553030°W 41.9336262°N Selected Features: 0

Gravity Mains

Field: Add Delete Calculate Selection: Zoom To Switch Clear Delete Copy

e	Material	Diameter	Main Shape	Year Lined	Liner Type	From Manhole	To Manhole
	Reinforced Concrete	36"	Circular		Cured In Place		
	Reinforced Concrete	36"	Circular		Cured In Place		
	Reinforced Concrete	36"	Circular		Cured In Place		
	Reinforced Concrete	36"	Circular		Cured In Place		

0 of 1259 selected Filters: 100%

Autodesk AutoCAD Map 3D 2018 Working_Sewer.dwg

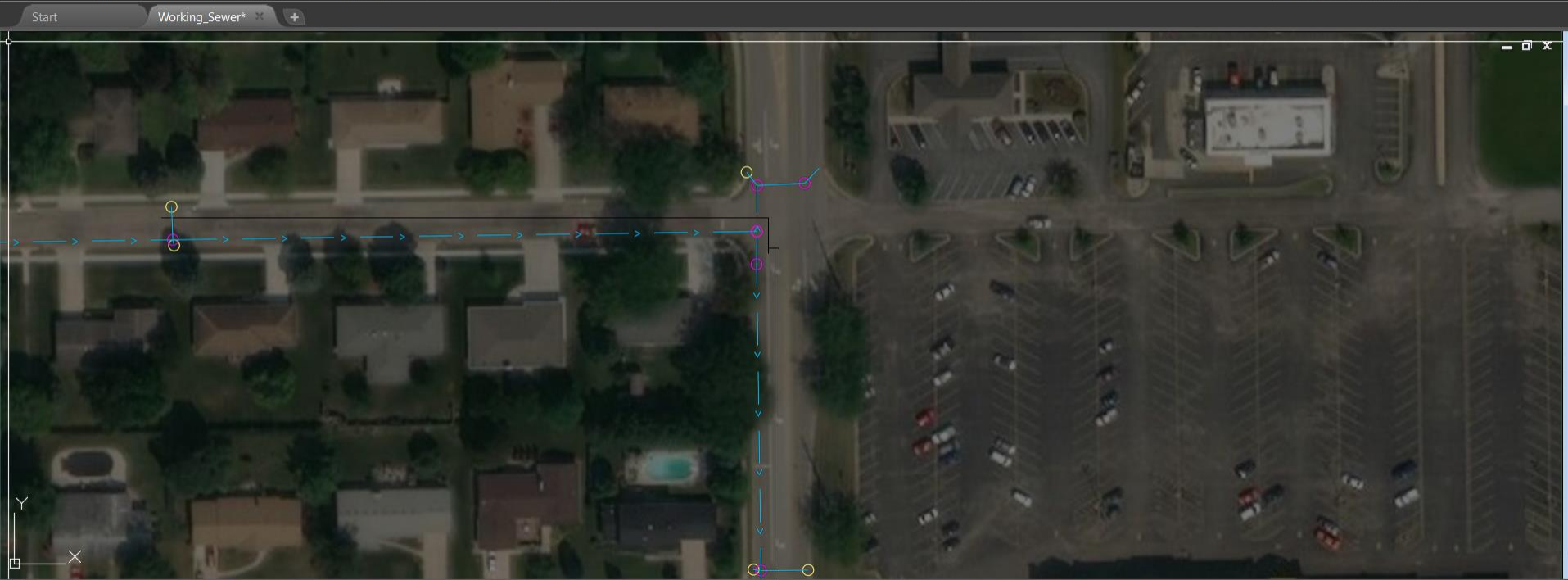
Home Insert Annotate Parametric Manage View Output Map Drafting Map Data & Analysis Help A360 Express Tools Plug-ins Featured Apps ArcGIS

World Imagery Gravity_Mains_YourCity_StormN... Attributes

Esri Maps Add Service Sign In GIS Contents Manage Locate Zoom Extents Identify Maps

Synchronize All Elevate Feature Help

Features Elevation Resources

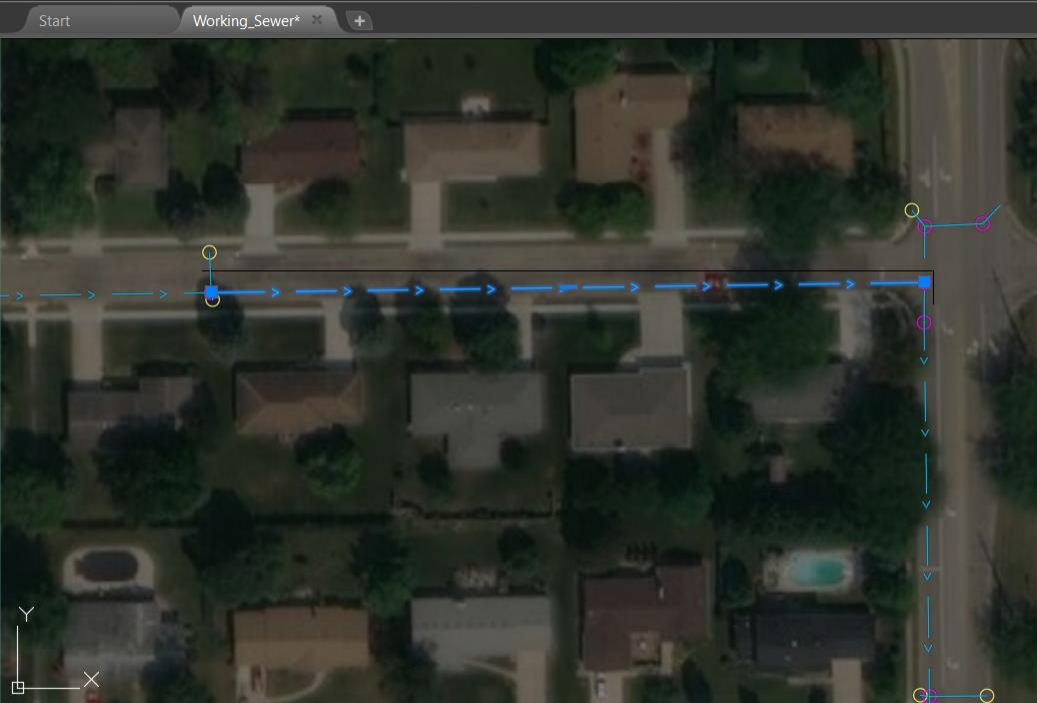


Current settings: Copy mode = Multiple
Specify base point or [Displacement/mOde] <Displacement>:
Specify second point or [Array] <use first point as displacement>:
Specify second point or [Array/Exit/Undo] <Exit>: *Cancel*

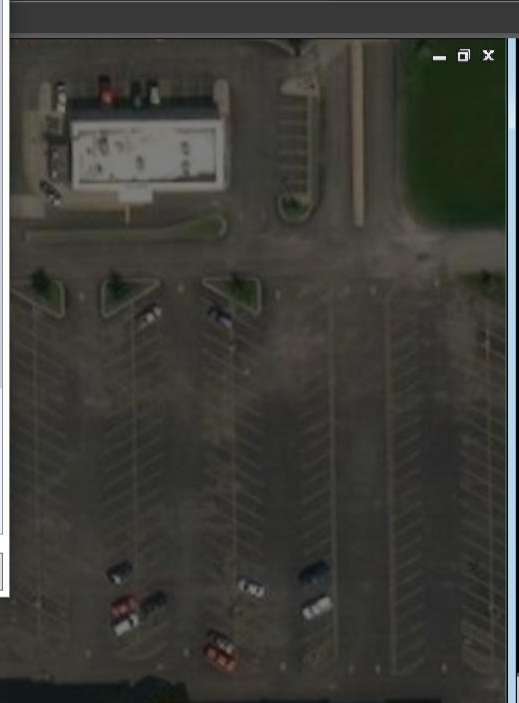
Type a command

Model Layout1 Layout2 +

1x <none> 1:30.018 MODEL



Entity ID	(2232879035648)
Type	LWPOLYLINE
activeflag	True
comments	
diameter	12"
downelev	0
enabled	True
facilityid	
frommh	
instaldate	Select a date 15
lasteditor	
lastupdate	Select a date 15
layer	
linedyear	
linertype	
mainshape	Circular
maintby	Our Agency
material	Reinforced Concrete
objectid	Pre-Stressed Concrete Cylinder
	Reinforced Concrete
	Reinforced Plastic (Truss)
	Segmented Block
	Steel
	Transite
	Vitrified Clay
	Wood
	Other
	Unknown
	Brick Masonry
	High Density Polyethylene
	PVC SDR-35
	Black Plastic Tile

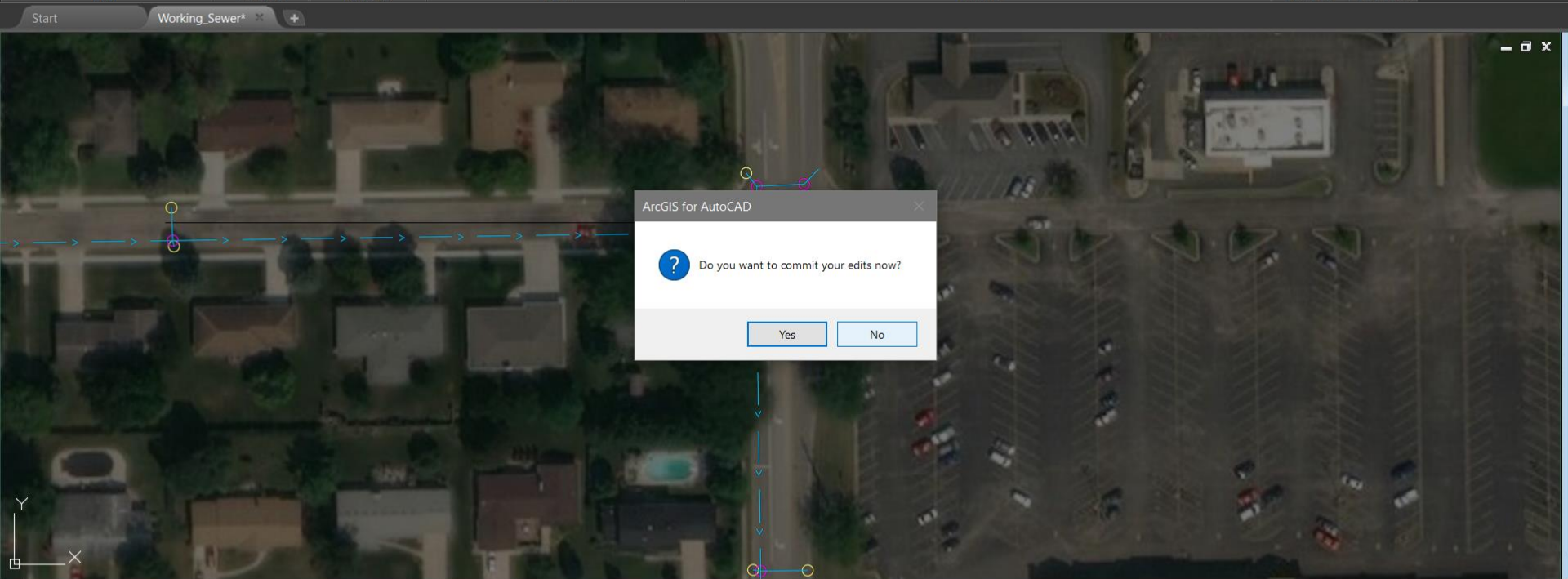


Autodesk AutoCAD Map 3D 2018 Working_Sewer.dwg

Home Insert Annotate Parametric Manage View Output Map Drafting Map Data & Analysis Help A360 Express Tools Plug-ins Featured Apps ArcGIS

World Imagery Gravity_Mains_YourCity_StormN... Attributes

Add Manage Navigate Maps Features Elevation Resources



ArcGIS for AutoCAD

Do you want to commit your edits now?

Yes No

Regenerating model.
Command: *Cancel*
Command:
Command:
_QSAVE

Model Layout1 Layout2

1x <none> 1:30.018 MODEL

Autodesk AutoCAD Map 3D 2018 Working_Sewer.dwg

Type a keyword or phrase

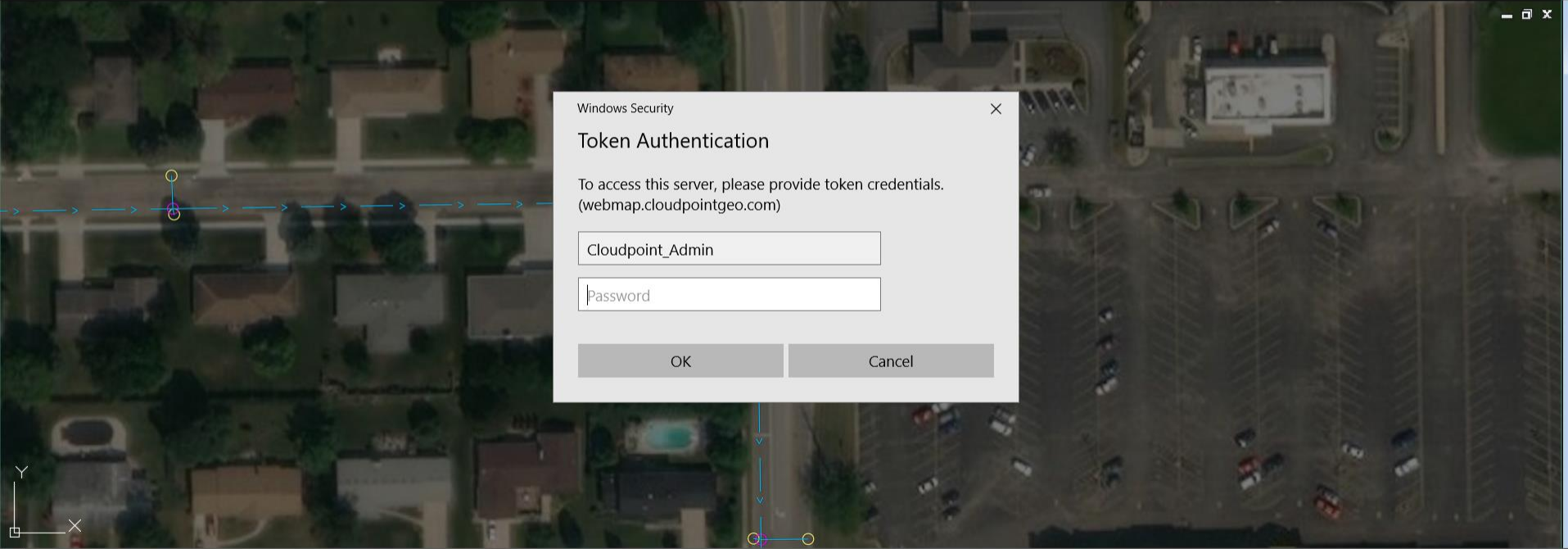
Home Insert Annotate Parametric Manage View Output Map Drafting Map Data & Analysis Help A360 Express Tools Plug-ins Featured Apps ArcGIS

World Imagery Gravity_Mains_YourCity_StormN... Attributes

Esri Maps: Add Service Sign In GIS Contents Locate Zoom Extents Identify Synchronize All Elevate Feature Help

Add Manage Navigate Maps Features Elevation Resources

Start Working_Sewer



Windows Security

Token Authentication

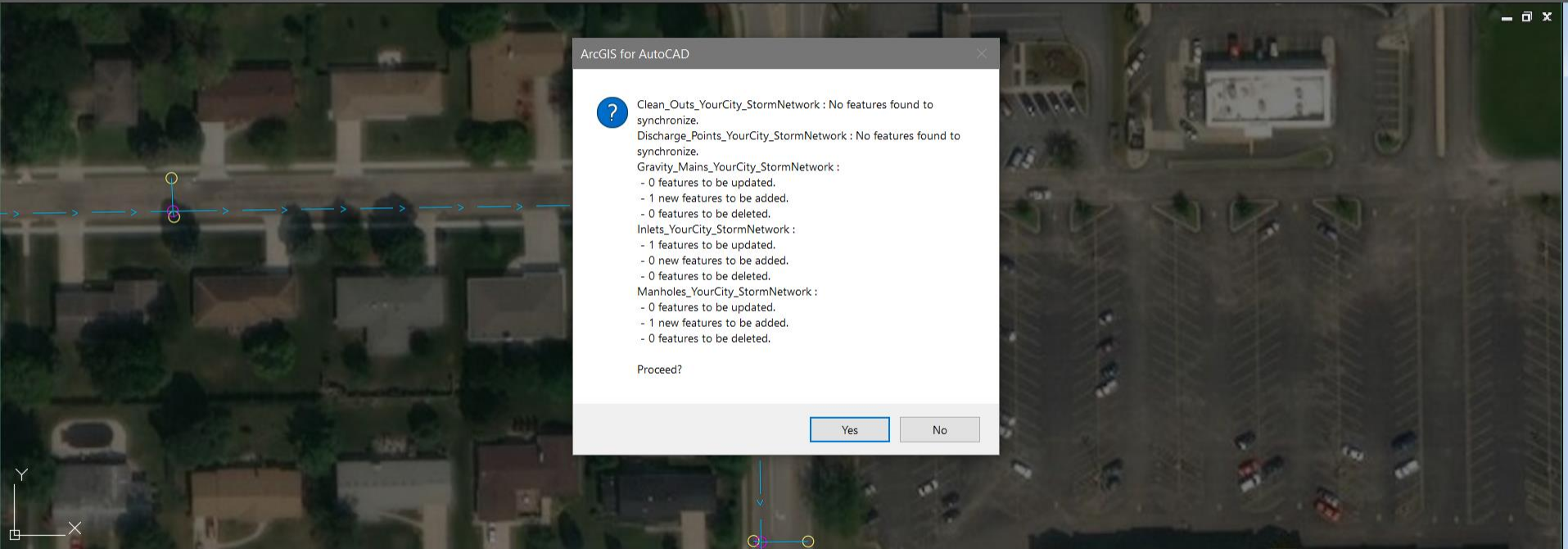
To access this server, please provide token credentials.
(webmap.cloudpointgeo.com)

OK Cancel

Command: _QSAVE Regenerating model.
Regenerating model.
Command:
Command:
_QSAVE

Model Layout1 Layout2

1x [none] 1:30.018 MODEL



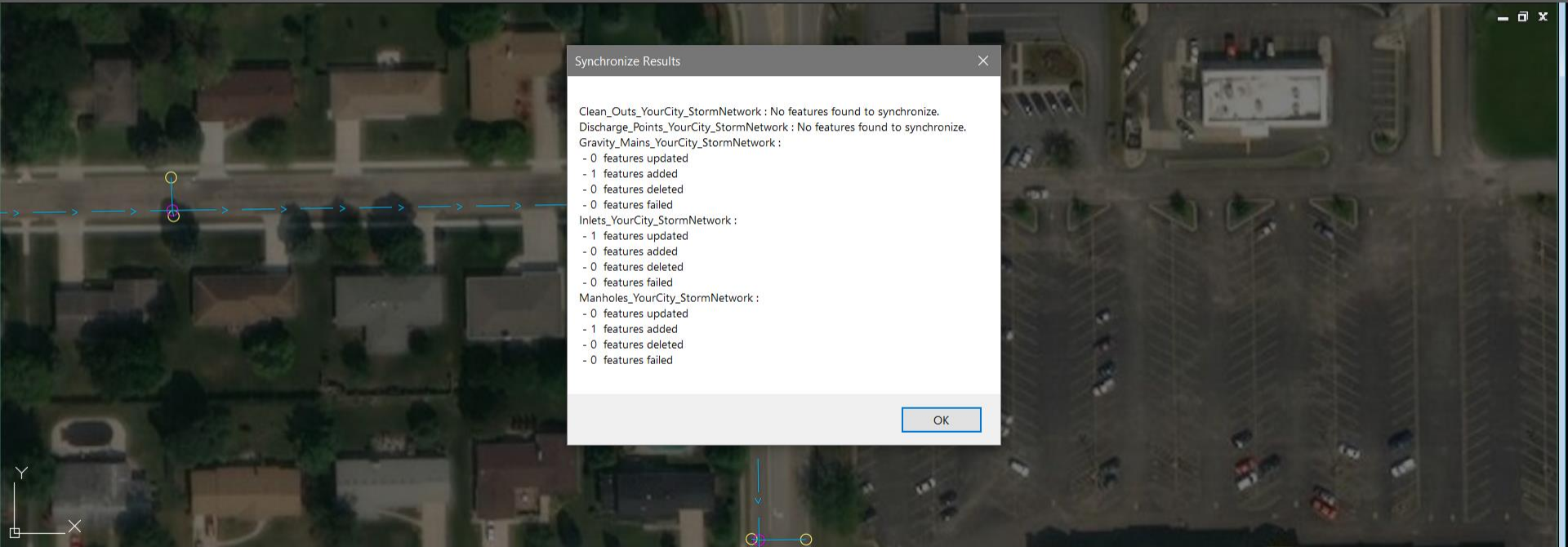
ArcGIS for AutoCAD

? Clean_Outlets_YourCity_StormNetwork : No features found to synchronize.
Discharge_Points_YourCity_StormNetwork : No features found to synchronize.
Gravity_Mains_YourCity_StormNetwork :
- 0 features to be updated.
- 1 new features to be added.
- 0 features to be deleted.
Inlets_YourCity_StormNetwork :
- 1 features to be updated.
- 0 new features to be added.
- 0 features to be deleted.
Manholes_YourCity_StormNetwork :
- 0 features to be updated.
- 1 new features to be added.
- 0 features to be deleted.

Proceed?

Yes No

Command: _QSAVE Regenerating model.
Regenerating model.
Command:
Command:
_QSAVE

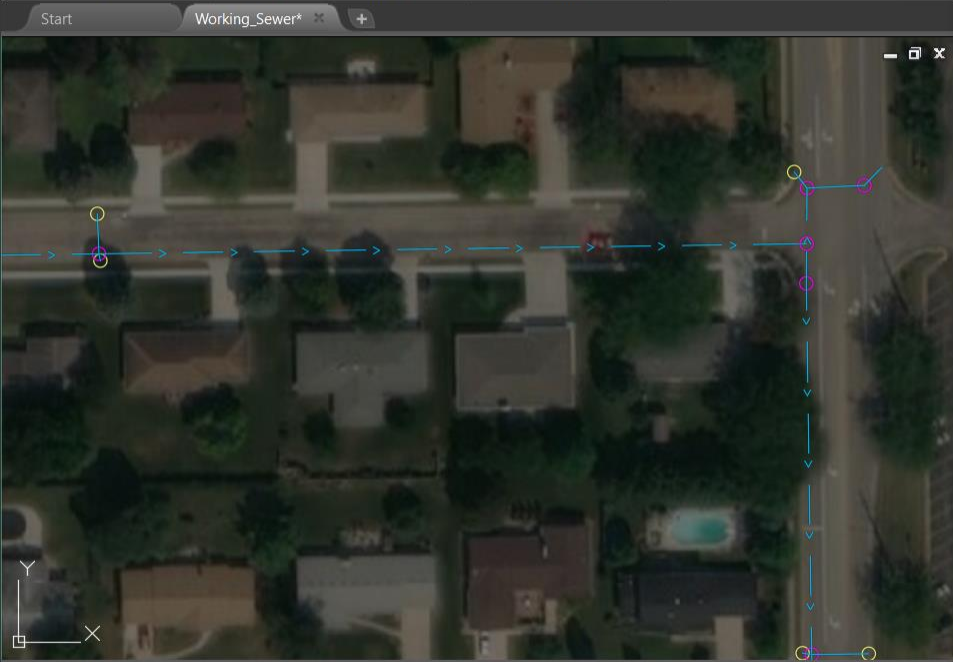


Working_Se... Type a keyword or phrase

Home Insert Annotate Parametric Manage View Output Map Drafting Map Data & Analysis

Esri Maps Add Service GIS Contents Locate Zoom Extents Identify Features Elevation Resources

Add Manage Navigate Maps



Command:
Command:
Command: _QSAVE Regenerating model.
Regenerating model.

Type a command

Model Layout1 Layout2

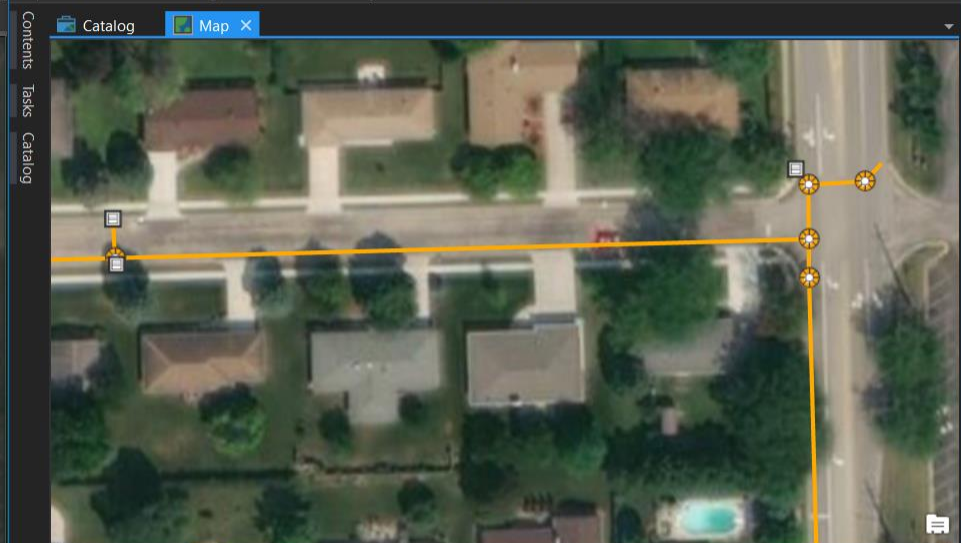
1x <none> 1:30.2499 MODEL

ArcGIS Pro - ArcGIS for AutoCAD - Map

Project Map Insert Analysis View Edit Imagery Share

Explore Bookmarks Go To XY Select Select By Attributes Select By Location Inquiry Labeling Offline

Clipboard Navigate Layer Selection



1:906 89.0561973°W 41.9330200°N Selected Features: 0

Gravity Mains

Field: Add Delete Calculate Selection: Zoom To Switch Clear Delete Copy

Material	Diameter	Main Shape	Year Lined	Liner Type	From Manhole	To Manhole
Reinforced Concrete	36"	Circular		Cured In Place		
Reinforced Concrete	36"	Circular		Cured In Place		
Reinforced Concrete	36"	Circular		Cured In Place		
Reinforced Concrete	36"	Circular		Cured In Place		

0 of 1259 selected Filters: 100%

Questions?

Erin Strickler

estrickler@cloudpointgeo.com

Twitter:

[@cloudpointgeo](https://twitter.com/cloudpointgeo)

LinkedIn:

[Cloudpoint Geographics Inc.](#)

Facebook:

[Cloudpoint Geographics, Inc.](#)

Web:

www.cloudpointgeo.com

