

# GeoDev Meetup

Chicago, IL

Building Productive Dashboards for  
Small Municipalities

# Small Municipalities

1,366 Municipalities in Illinois

1,275 are under 25,000 (91)

906 less than 2,500

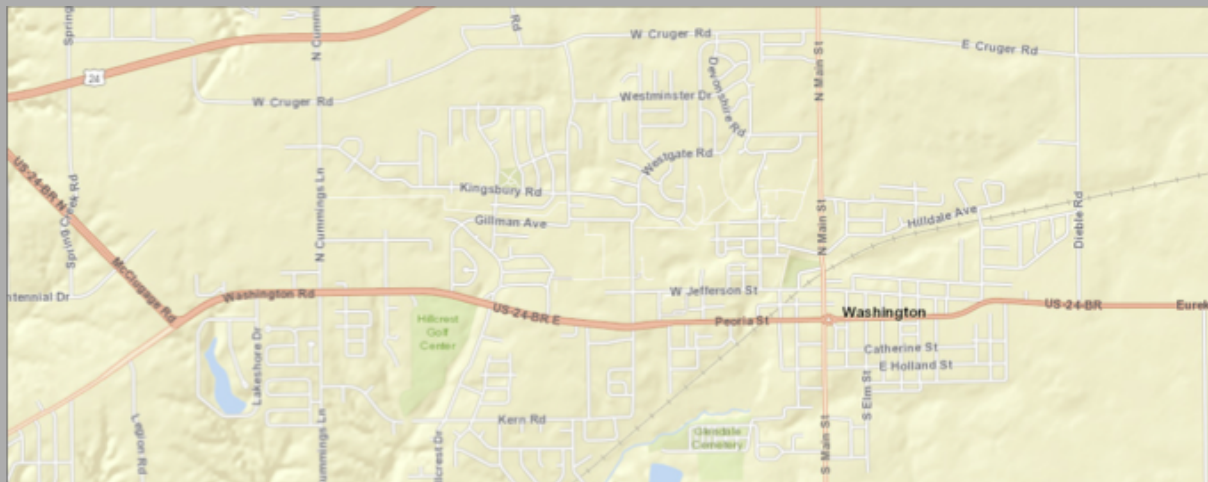
369 between 2,500 - 25,000

**Time, Illinois**  
**2010: Pop 22**



Washington

16,811



Rock Falls

9,266

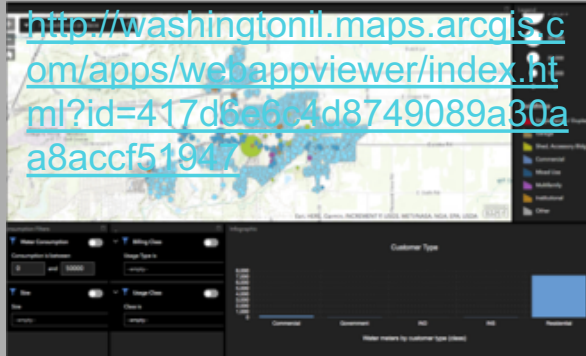


# Washington

16,811

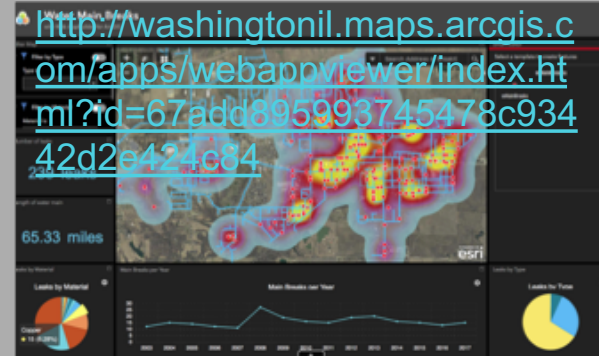
## Meter Usage using WAB

<http://washingtonil.maps.arcgis.com/apps/webappviewer/index.html?id=417d6e6c4d8749089a30a8accf51947>



## Main Breaks using WAB

<http://washingtonil.maps.arcgis.com/apps/webappviewer/index.html?id=67add695993745478c93442d2e424c84>



# Rock Falls

9,266

## Dashboard using Op Dashboard

<http://rfelectric.maps.arcgis.com/apps/opsdashboard/index.html#/4a0917ea54e242d29c27938cec28ebb5>



## Dashboard using WAB

<http://rfelectric.maps.arcgis.com/apps/webappviewer/index.html?id=9bcc21dce02643828c579471b10c5cfe>



### Hydrants Not Reviewed

# 394

Last update: a minute ago

Need Reviewed

### Meter Usage- Above 2,000 Units

# 117

Last update: a minute ago

Usage Above 2,000

### Valves Not Reviewed

# 46

Last update: a minute ago

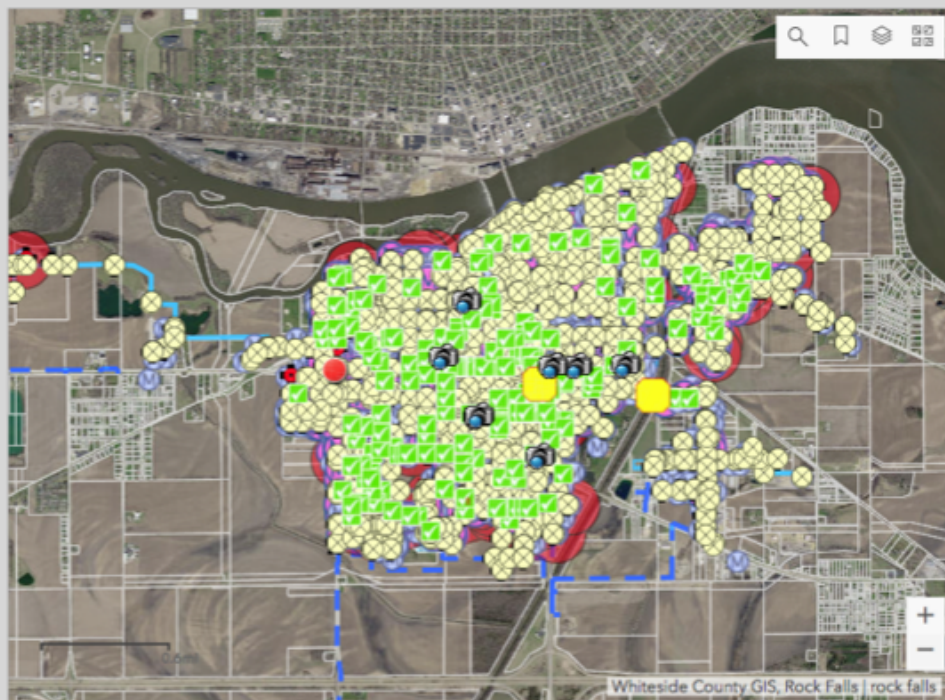
Need Reviewed

### Water Leaks Confirmed

# 0

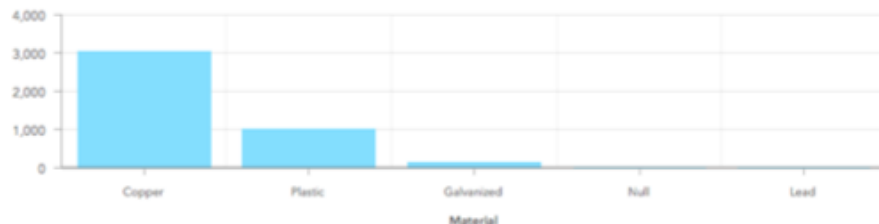
Last update: a minute ago

Confirmed Leaks



Whiteside County GIS, Rock Falls | rock falls

### Service Lines By Material



Last update: a minute ago

Service Lines

Mains

### Photos



### Medical Concerns

<Null>

Dialysis machine hooked to city water

### Field Notes



### Water Main Crossing



### Water Leaks

- Repair Completed
- In Progress
- Confirmed
- Customer Call

### System Valves



### Hydrants



### Meters (Cross-Connection Survey)

Filter Map

Heat Map- On/Off

Filter By Material

Material is

Filter by Leak Date

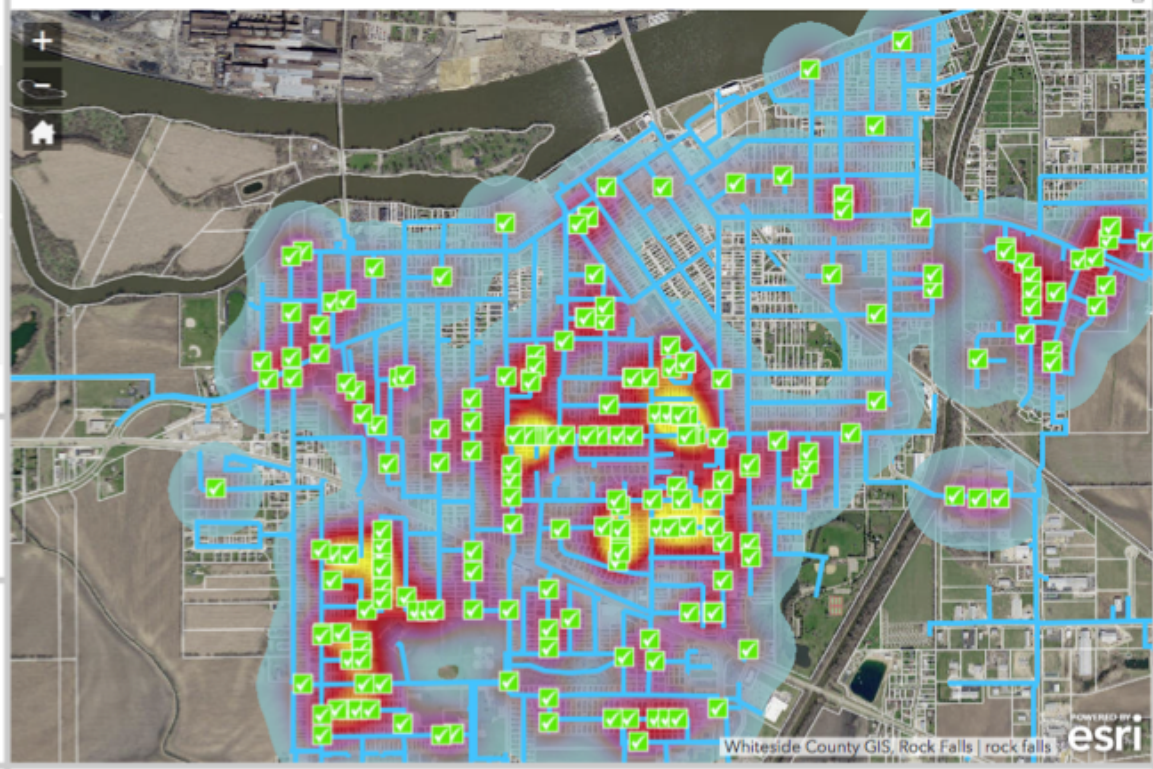
Leak Date is between  and

Number of Leaks

**212 Leaks**

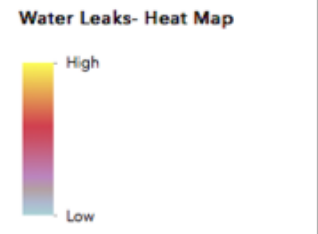
Length of Mains

**50.61 Miles**



Layer List

- Water Leaks**
- Repair Completed
  - In Progress
  - Confirmed
  - Customer Call



Mains

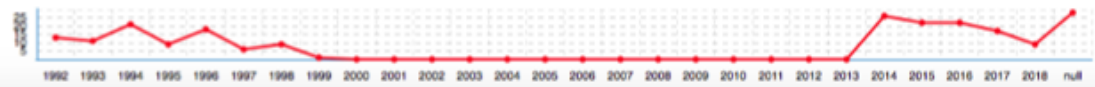
Small Mains by Material



Turn on layer in layer list to see graph

Leaks By Year

Water Leaks By Year

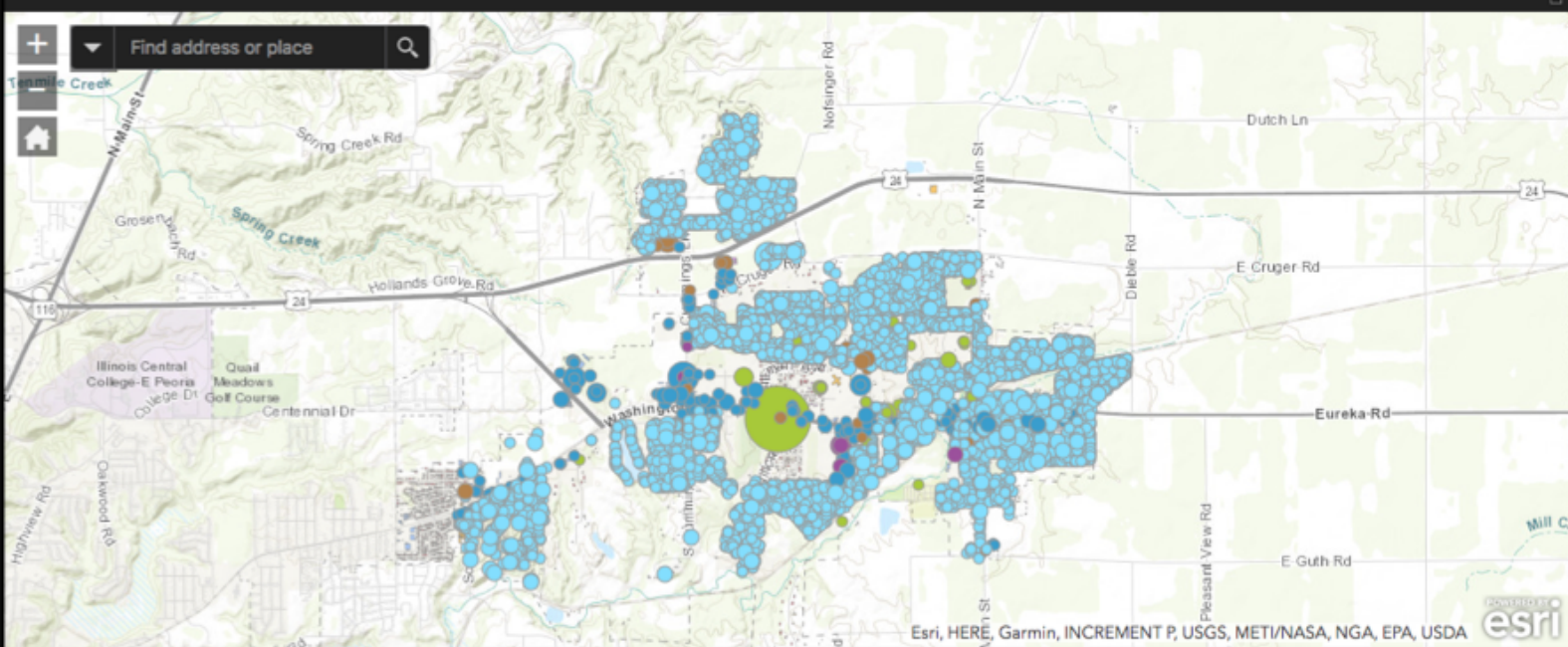


*Edits currently done in ArcMap, but could potentially be done here*



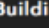
Leak Detection Valves by Type





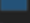

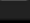
Turn on layer in layer list to see graph



**Legend**

-  30,000
-  20,000
-  10,000
-  < -3

**Buildings**

-  Single Family / Duplex
-  Garage
-  Shed, Accessory Bldg
-  Commercial
-  Mixed Use
-  Multifamily
-  Institutional
-  Other

**Consumption Filters**

**Water Consumption**

Consumption is between  and

**Usage Type**

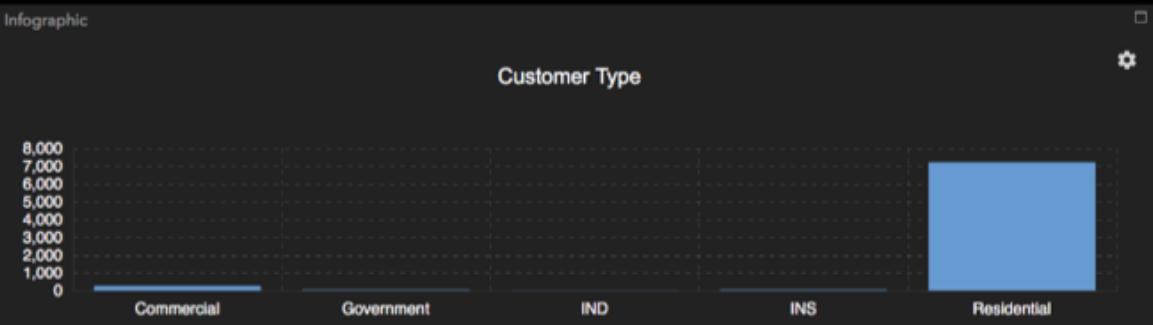
Usage Type is

**Size**

Size

**Usage Class**

Class is



Water meters by customer type (class)



# Water Main Breaks

with Web AppBuilder for ArcGIS

Filter Map

Filter by Type

Type is

Filter by Material

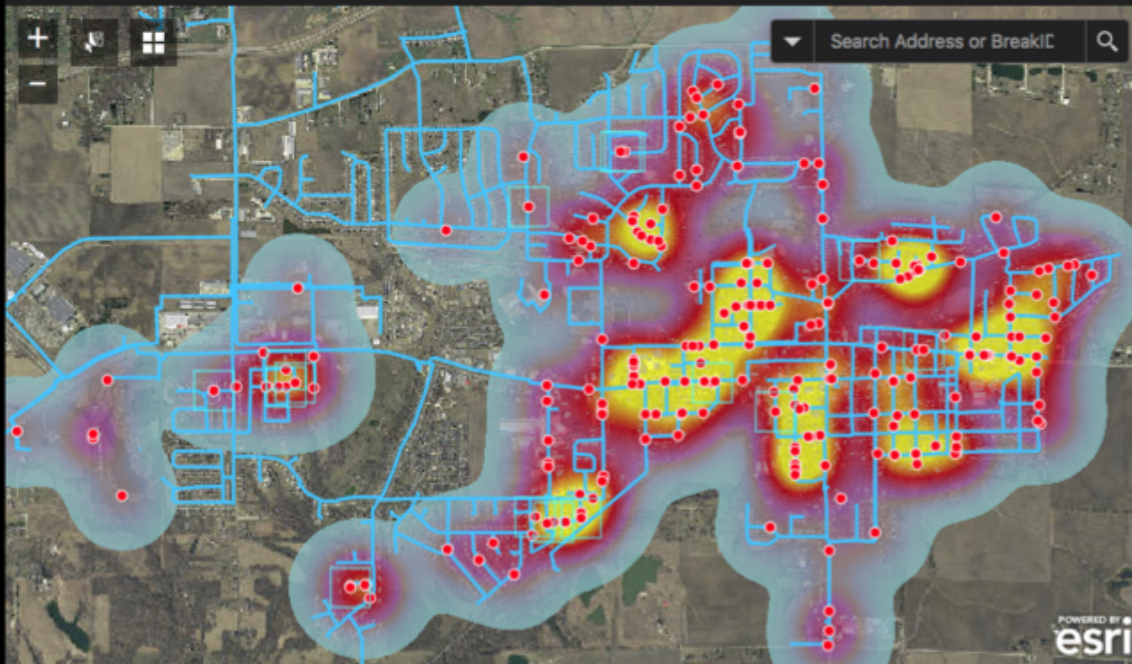
Material is

Number of leaks

239 leaks

Length of water main

65.33 miles



Smart Editor

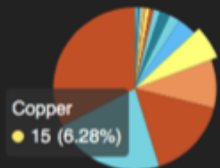
Select a template to create features

wMainBreaks

wMainBreaks

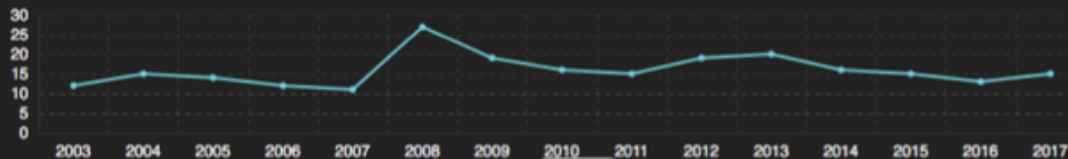
Leaks by Material

Leaks by Material



Main Breaks per Year

Main Breaks per Year



Leaks by Type

Leaks by Type

